

PRODUCT DATA SHEET

TERRASSOTEC 5,5 TRILOBULAR

PRODUCT DESCRIPTION

The Terrassotec 5.5 Trilobular made of hardened stainless steel / A2 stainless steel / A4 stainless steel is a screw that has been **specifically** developed for **fastening decking boards** to wooden substructures. The screw has an **extra reinforced shank**, an additional **underhead thread** and a step head with **TX drive**.

MATERIAL

Hardened stainless steel:

- Stainless steel according to DIN EN 10088
- Acid-resistant under certain circumstances
- 10 years of experience without any corrosion problems when used with suitable woods
- 50% higher breaking torque than A2 and A4
- Magnetisable
- Can be used in service classes 1, 2 and 3
- Not suitable for woods containing high levels of tannin, such as cumarú, oak, merbau, robinia, etc.
- Not suitable for salty atmospheres
- Not suitable for chlorinated atmospheres



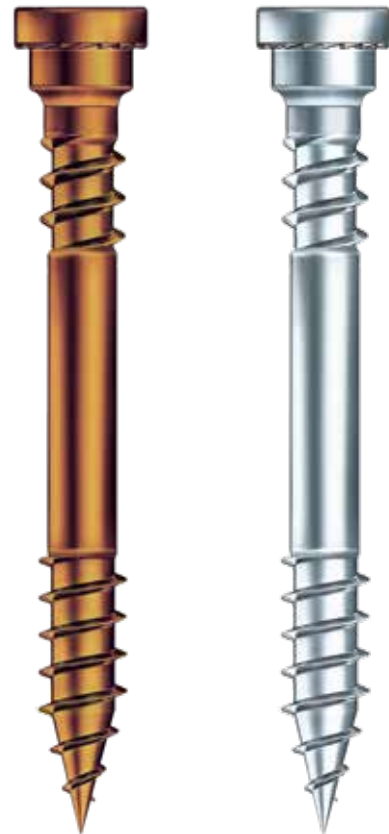
A2 stainless steel:

- Suitable for salty atmospheres under certain circumstances
- Acid-resistant under certain circumstances
- Not suitable for chlorinated atmospheres
- Can be used in service classes 1, 2 and 3
- Not suitable for woods containing high levels of tannin, such as cumarú, oak, merbau, robinia, etc.



A4 stainless steel:

- Suitable for woods containing high levels of tannin, such as cumarú, oak, merbau, robinia, etc.
- Suitable for salty atmospheres
- Acid-resistant under certain circumstances
- Can be used in service classes 1, 2 and 3
- Not suitable for chlorinated atmospheres



APPLICATION IMAGE



Use of the Terrassotec Trilobular on oak wood.

PRODUCT DATA SHEET

TERRASOTEC 5,5 TRILOBULAR

ADVANTAGES

- Reduction of chip build-up due to special head
- The special screw geometry reduces the risk of splitting the wood
- ⇒ However, pre-drilling is absolutely recommended, especially for hardwoods or in deck and facade construction!
- Underhead thread provides additional support for the decking boards
- Screws do not hit one another when screwed in using the TX drive

i INSTRUCTIONS FOR USE

When building a deck from high-quality wood, pre-drilling and pre-sinking of the decking boards is highly recommended. This applies to both softwood and hardwood. We recommend our Drill Stop for this purpose.

PRODUCT TABLE

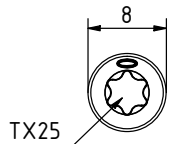
Terrasotec 5,5 Trilobular					
Art. no.	Dimensions Ød x L [mm]	Thread length lg [mm]	Head diameter Ødh [mm]	Drive	PU
Hardened stainless steel					
905530	5,5 x 50	17	8,0	TX25 •	200
905529	5,5 x 60	24	8,0	TX25 •	200
905531	5,5 x 70	34	8,0	TX25 •	200
905538	5,5 x 80	44	8,0	TX25 •	200
905545	5,5 x 90	54	8,0	TX25 •	200
905546	5,5 x 100	64	8,0	TX25 •	200
905549 ^{a)}	5,5 x 120	84	8,0	TX25 •	200
A2 stainless steel					
905539	5,5 x 50	17	8,0	TX25 •	200
905540	5,5 x 60	24	8,0	TX25 •	200
905541	5,5 x 70	34	8,0	TX25 •	200
905542	5,5 x 80	44	8,0	TX25 •	200
A4 stainless steel					
905555	5,5 x 50	17	8,0	TX25 •	100
905556	5,5 x 60	24	8,0	TX25 •	100
905557	5,5 x 70	34	8,0	TX25 •	100
905558	5,5 x 80	44	8,0	TX25 •	100
905547	5,5 x 90	54	8,0	TX25 •	100
905548	5,5 x 100	64	8,0	TX25 •	100

^{a)}Also used for fixing 3D facades.

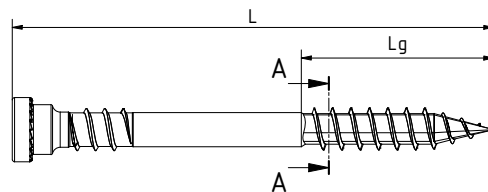
PRODUCT DATA SHEET

TERRASSOTEC 5,5 TRILOBULAR

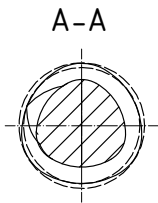
DRAWINGS



Top view



Side view



If you are not familiar with how this product is used, and particularly with the product's intended use, please contact our Application Technology department (Technik@eurotec.team).