

# PRODUCT DATA SHEET

## PRESS-IN NUT

### PRODUCT DESCRIPTION

The M12/M16 press-in nut is a high-quality fastening solution for applications that require a stable internal thread. It is made of steel or stainless steel and offers a high load-bearing capacity. The nut can easily be inserted into pre-drilled holes in the timber and, with its galvanised surface, ensures additional corrosion protection, whereby its service life is extended.



### ADVANTAGES / SPECIFICATIONS

- **Easy to install:** Quick and easy installation by hammering into the component.
- **Corrosion protection:** The galvanised design protects against rust and increases the nut's service life.
- **Compatibility:** M12/M16
- **Field of application:** Suitable for use in timber.
- **Use:** Single use



#### Notes

For special requirements or other materials, there are individual solutions available. Contact us if you have special requirements or for tailor-made offers.

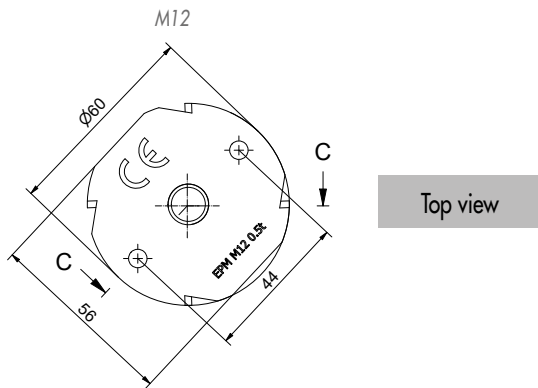
### PRODUCT TABLE

Press-in nut					
Art. no.	Load class [t]	Diameter [mm]	Thread [dxh]	Weight [kg]	PU
111420	0,5	60 x 3	M12	0,068	50
111421	1,2	60 x 3	M16	0,074	50

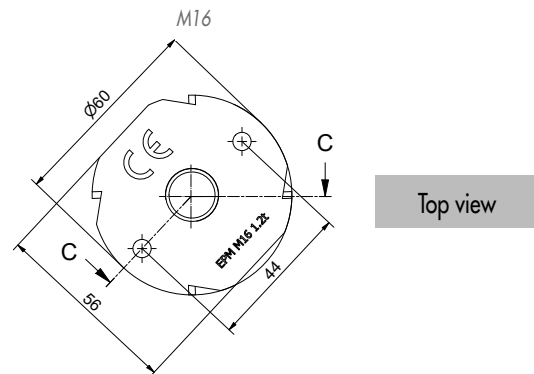
# PRODUCT DATA SHEET

# PRESS-IN NUT

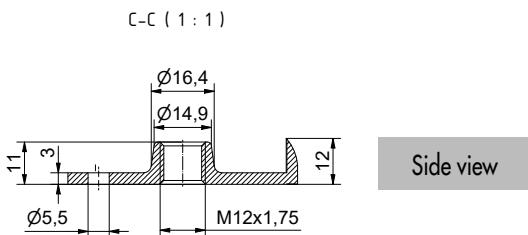
## TECHNICAL INFORMATION



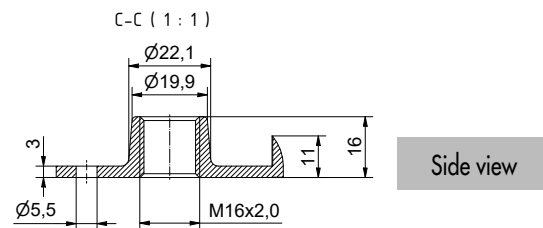
Top view



Top view



Side view



Side view

If you are not familiar with how this product is used, and particularly with the product's intended use, please contact our Application Technology department (Technik@eurotec.team).