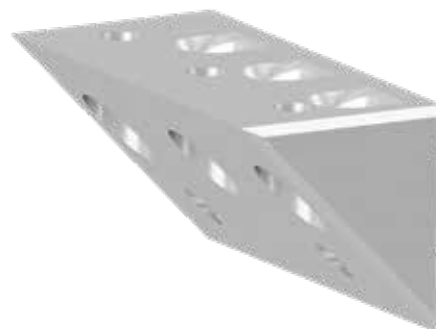


# PRODUCT DATA SHEET

## ECKTEC

### PRODUCT DESCRIPTION

The EckTec connector can replace the conventional brace. This allows a better look without disruptive braces, especially at low installation heights.



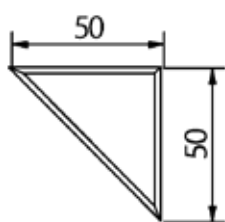
### ADVANTAGES / SPECIFICATIONS

- Supports load absorption with horizontal forces
- Pre-assembly at the factory optional
- Many different areas of use

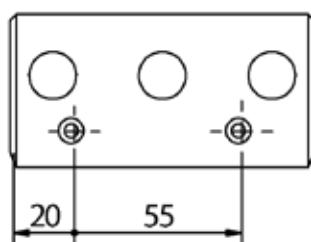
### MATERIAL

- EN-AW 6063-T66 (AlMgSi0,5)

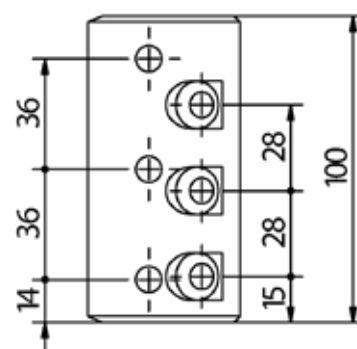
### TECHNICAL INFORMATION



Side view



Top view



Top view

# PRODUCT DATA SHEET

# ECKTEC

## LOAD CAPACITY

Load capacities EckTec 100 Wood - C24, $\rho_k = 350 \text{ kg/m}^3$ ; $k_{mod} = 1,0$	$M_{1,Rd}$ [kNm]	$F_{1,Rd}$ [kN]
Torque	1,39	-
Torque and traction (combined)	0,96	8,4

Further information on static pre-dimensioning can be found in our separate pre-dimensioning sheet.



### Note

This document reflects only the results of a preliminary design/dimensioning aid.

## INSTRUCTIONS FOR USE

The EckTec connector is fixed with two 4 x 40 Paneltwistecs. The first KonstruX ST 8 x 155 fully-threaded screws are then set at 25° in the posts. After mounting the cross beam, the other 8 x 95 KonstruX ST fully-threaded screws can be set at 90°. Minimum cross-section of the beam: 120 x 120 mm.

## PRODUCT TABLE

EckTec		
Art. no.	Dimensions [mm] <sup>a)</sup>	PU*
975664	50 x 50 x 100	1

a) Width x height x depth

\* incl. two Paneltwistec countersunk button head blue TX20 4,0 x 40/24 mm, three KonstruX ST countersunk button head blue TX40 8 x 95 mm and three KonstruX ST countersunk button head blue TX40 8 x 155 mm

If you are not familiar with how this product is used, and particularly with the product's intended use, please contact our Application Technology department (Technik@eurotec.team).