

PRODUCT DATA SHEET

TENSION ROD PRESSURE PLATE 620

PRODUCT DESCRIPTION

The Tension rod pressure plate 620 can be combined with the corresponding tension rod 620. The former is necessary to prevent a deformation of the tension rod and to increase the tensile forces.



ADVANTAGES

- Ideal for anchoring cross-laminated timber elements (CLT)
- For installation in wood and concrete

MATERIAL

- Galvanised S355 construction steel

**Note**

The Tension rod pressure plate 620 may only be used in combination with the tension rod 620 (Art. no.: 954232).

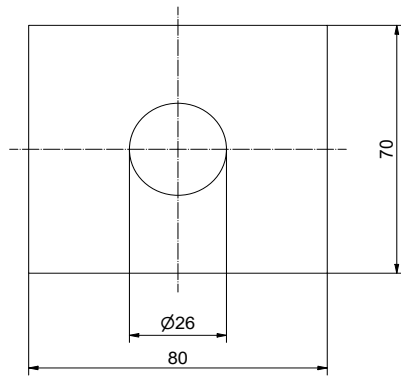
CERTIFICATION

- ETA-19/0020 requested

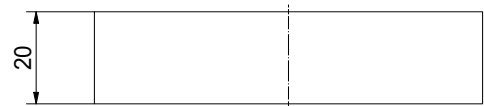
PRODUCT DATA SHEET

TENSION ROD PRESSURE PLATE 620

TECHNICAL INFORMATION



Top view



Side view

INSTRUCTIONS FOR USE

The tension rods are placed on the planking in the floor area and fastened to the stem and, if necessary, to the sole plate with screws or anchor nails. In this regard, the connection can safely transfer tensile, suction and shearing forces into the tension rod via the screws and finally into the base plates via a dowel.

PRODUCT TABLE

Tension rod pressure plate 620				
Art. no.	Designation	Dimension [mm]	Matching tension rod	PU
954230	Tension rod pressure plate 620	80 x 70 x 20	Tension rod 620 (954232)	1

If you are not familiar with how this product is used, and particularly with the product's intended use, please contact our Application Technology department (Technik@eurotec.team).