

Product data sheet – Porenbetonschraube 1000 EN

Product description

The **Porenbetonschraube 1000** is *the* alternative to the classic plug and a special screw for anchorages in aerated concrete. The Porenbetonschraube 1000 is set into the underground without a plug and without pre-drilling. The screw thread cuts its mating thread into the underground. This direct fixing saves time and costs.

The high strength screw steel, the heat treatment and the special screw thread make the Porenbetonschraube 1000 function reliably in aerated concrete.

Material

Hardened **Carbon Steel**, special coating 1000

- Use in service class 1 and 2 according to EN 1995 - Eurocode 5
- Environment category C4 long/ C5-M medium according to EN ISO 12944-6
- High resistance against mechanical stress
- Not suitable for tannin-rich wood

Instructions for usages

1. Screwing in without pre-drilling of the aerated concrete
2. Screwing in with or without impact screw driver
3. Softwood has not to be pre-drilled
4. Hardwood may be pre-drilled with the nominal screw diameter, if necessary



Product data sheet – Porenbetonschraube 1000 EN

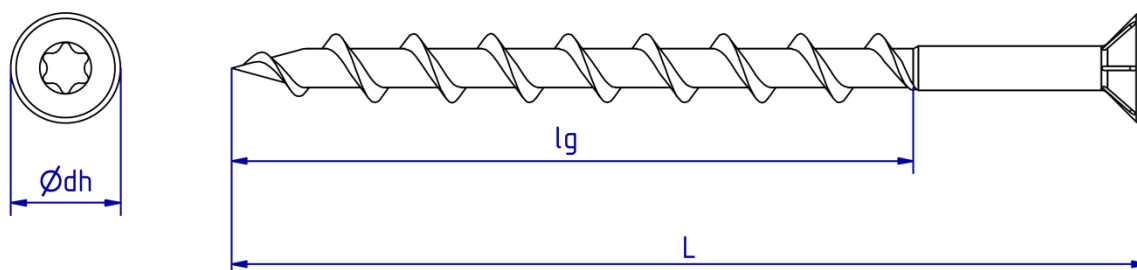
Article table

Porenbetonschraube 1000, Stahl sonderbeschichtet						
Art.No.	Dimension $\varnothing d \times L$ [mm]	Head diameter $\varnothing d_k$ [mm]	Min. embedment depth $H_{nom,min}$ [mm]	Max. fixture thickness $T_{fix,max}$ [mm]	Design value Pull-out resistance $N_{u,Rd}^t$ [kN] ^{a)}	PU [Stück]
944818	8x90	12	75	15	0,6	50
944819	8x100	12	75	25	0,6	50
944820	8x120	12	75	45	0,7	50
944821	8x140	12	80	60	0,7	50
944822	8x160	12	80	80	0,7	50
944823	10x140	14,5	95	45	0,9	50
944824	10x180	14,5	95	85	0,9	50

^{a)} For aerated concrete PP4 (4,0 MPa; 550 kg/m³), $\gamma_{M,u} = 2,5$

Drawings

- Porenbetonschraube 1000, steel special coating:



If you are not familiar with the application of the product at hand, especially with the handling according to given regulations, it is essential to get in contact with our technical application support department (Technik@eurotec.team).