

PRODUCT DATA SHEET

SLAB SUPPORT PP

PRODUCT DESCRIPTION

The slab support PP offers itself as an **optimal foundation for a simple, dry (mortarless) terrace construction** in connection with with large-format, tread-resistant floor slabs made of artificial stone, natural stone, etc.

The slab support PP serves as a support and **forms a distance to the floor** and, due to the joint cross, also a **distance between the slabs**. The floor slabs can thus be laid in a frost-proof manner. By stacking several slab supports on top of each other, the support height can be increased in **10 mm steps**.

NOTE

We recommend not to place more than 3 bearings on top of each other.



ADVANTAGES

- Resistant to weathering, UV exposure, insects and decay
- Very good chemical resistance
- Surface water can quickly and easily run off through the grooves
- Up to three units can be stacked on top of one another

MATERIAL

- PP (Polypropylene)

IMAGES OF APPLICATIONS



The slab support PP can be used individually under stone slabs ...



... or double.

PRODUCT DATA SHEET

SLAB SUPPORT PP



ASSEMBLY NOTE

When using slab supports, the terrace must be enclosed. This prevents the slab supports / terrace from moving. If the terrace is not enclosed, structural provision must be made for this.

Edging = green marking

Levelling pads compensate for any slope or unevenness in the stone slabs. A subsequent check can be made with a spirit level.



QUANTITY DETERMINATION

Baseplate [cm]	Piece/m ²
40 x 40	approx. 7.8
50 x 50	approx. 4.8
40 x 60	approx. 5.6
60 x 60	approx. 4.0

PRODUCT TABLE

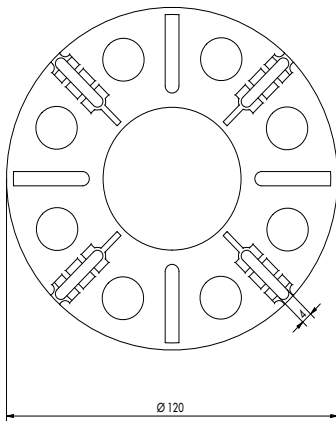
Art.-No.	Product description	Dimensions ¹⁾ [mm]	Joint spacer [mm]	Load-bearing capacity [kN]	PU
945431	Slab support PP	Ø 120 x 18/10	4	2	45

¹⁾Outside diameter x total height/Support height of a plate bearing

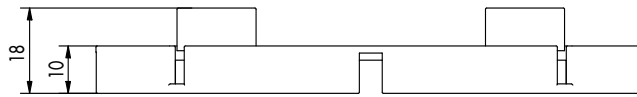
PRODUCT DATA SHEET

SLAB SUPPORT PP

DRAWINGS



Front view



Side view

If you are not familiar with how this product is used, and particularly with the product's intended use, please contact our Application Technology department (technik@eurotec.team).