

PRODUCT DATA SHEET

M-CLIP

PRODUCT DESCRIPTION

The **M-Clip** can be used to fasten **laterally grooved floorboards** to our Eveco aluminium system profile or alternatively to a wooden substructure. Only low-movement wood types or WPC floorboards are **suitable for concealed** installation with the M-Clip.

Further information on the **required groove geometry** can be found on the next page.

MATERIAL

- Stainless steel 1.4016

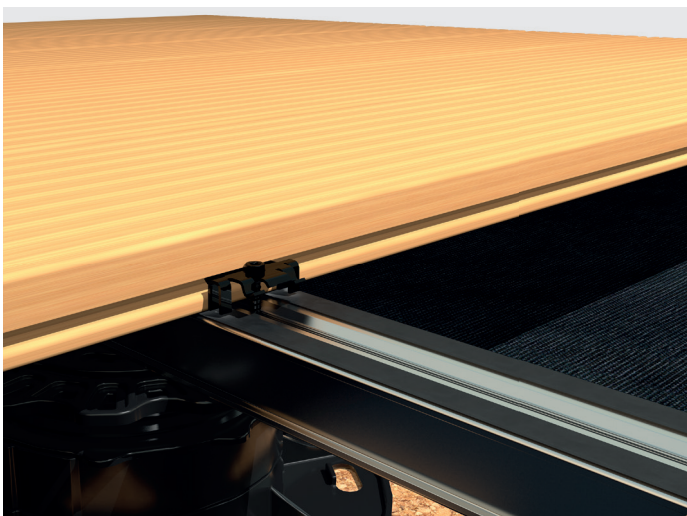
ADVANTAGES

- Quick and easy assembly
- Can be combined with a large range of side groove geometries
- Automatically creates a board spacing of 6 mm

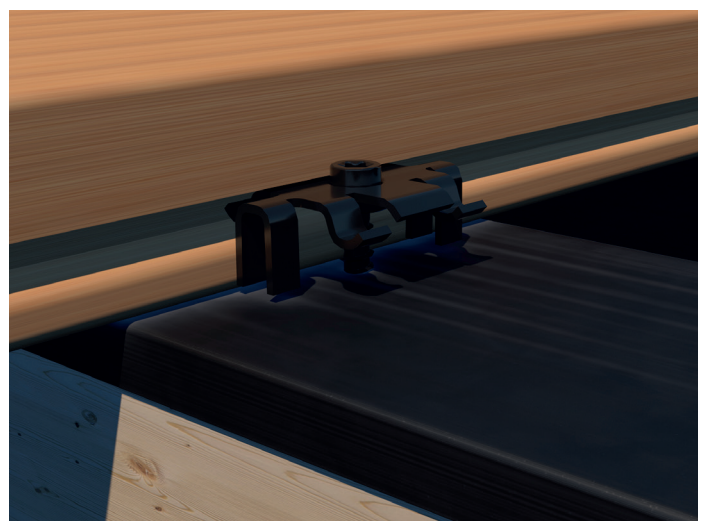


← Includes a suitable drilling screw

IMAGES OF APPLICATIONS



Fastening a laterally grooved wooden floorboard on our Eveco aluminium system profile.



Fastening a laterally grooved wooden floorboard to a wooden support structure.

PRODUCT DATA SHEET

M-CLIP



NECESSARY GROOVE GEOMETRY

If you are unsure whether the product is suitable for your project, talk to your timber dealer first of all and ask for the exact lateral groove dimensions. The M-Clip can be used for your boards if the lateral groove matches the dimensions shown here.



PRODUCT TABLE

Art. no.	Product description	Dimensions ¹⁾ [mm]	PU
111896	M-Clip	9,5 x 22 x 32	200

¹⁾Height x length x width

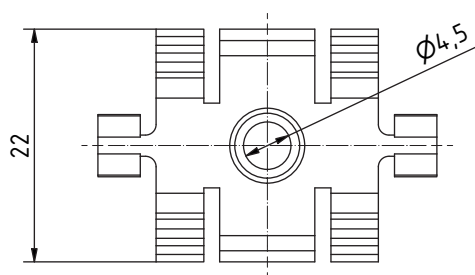
TORQUE



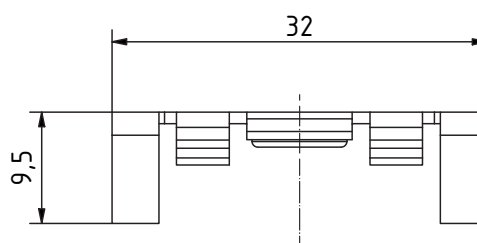
USE LOW TORQUE

Excessive torque can cause damage to or malfunction of the connection. So make sure that you adjust the torque setting and switch off the impact function on your screwdriver.

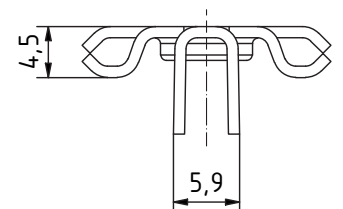
DRAWING



Top view



Front view



Side view

If you are not familiar with how this product is used, and particularly with the product's intended use, please contact our Application Technology department (technik@eurotec.team).