

# PRODUCT DATA SHEET

# ECOTEC CHIPBOARD SCREW

## PRODUCT DESCRIPTION

The EcoTec chipboard screw made of **galvanised and hardened carbon steel** is a wood construction screw, which is primarily used indoors.

**The screw has a countersunk head with TX drive.**

## ADVANTAGES

- 90° countersunk head with milled ribs
- Screws can be screwed in smoothly thanks to the TX drive

## MATERIAL

### Hardened carbon steel, blue galvanised

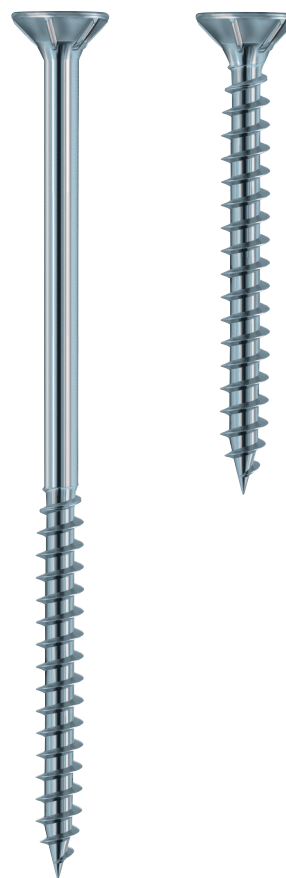
- Can be used in service classes 1 and 2 according to DIN EN 1995 (Eurocode 5)
- Good resistance to mechanical stresses

### Austenitic stainless steel A2 1.4301/X5CrNi18-10

- Resistant to rust to a limited extent
- Suitable for saline atmospheres to a limited extent
- Acid-resistant to a limited extent
- Not suitable for use in aggressive conditions and chlorinated environments

## APPROVAL

- European Technical Assessment  
ETA-11/0024 (only blue galvanised steel)



# PRODUCT DATA SHEET

# ECOTEC CHIPBOARD SCREW

## PRODUCT TABLE

EcoTec, blue galvanised carbon steel

Art. no.	Dimensions Ød x L [mm]	Thread length lg [mm]	Head diameter Ødh [mm]	Drive	PU
903714	3.0 x 13	Fully threaded	6.0	TX10 <sup>o</sup>	1000
903715	3.0 x 15	Fully threaded	6.0	TX10 <sup>o</sup>	1000
903716	3.0 x 20	Fully threaded	6.0	TX10 <sup>o</sup>	1000
903717	3.0 x 25	Fully threaded	6.0	TX10 <sup>o</sup>	500
903718	3.0 x 30	Fully threaded	6.0	TX10 <sup>o</sup>	1000
903719	3.0 x 35	Fully threaded	6.0	TX10 <sup>o</sup>	1000
903720	3.0 x 40	23	6.0	TX10 <sup>o</sup>	1000
903721	3.0 x 45	25	6.0	TX10 <sup>o</sup>	1000

Attention: Screws with Ø = 3.0 mm are not regulated according to ETA

903722	3.5 x 12	Fully threaded	7.0	TX20 <sup>o</sup>	1000
903723	3.5 x 15	Fully threaded	7.0	TX20 <sup>o</sup>	1000
903724	3.5 x 20	Fully threaded	7.0	TX20 <sup>o</sup>	1000
903725	3.5 x 25	Fully threaded	7.0	TX20 <sup>o</sup>	1000
903726	3.5 x 30	Fully threaded	7.0	TX20 <sup>o</sup>	1000
903727	3.5 x 35	21	7.0	TX20 <sup>o</sup>	1000
903728	3.5 x 40	23	7.0	TX20 <sup>o</sup>	1000
903729	3.5 x 45	25	7.0	TX20 <sup>o</sup>	500
903730	3.5 x 50	30	7.0	TX20 <sup>o</sup>	1000
903731	4.0 x 15	Fully threaded	7.5	TX20 <sup>o</sup>	1000
903732	4.0 x 20	Fully threaded	7.5	TX20 <sup>o</sup>	1000
903733	4.0 x 25	Fully threaded	7.5	TX20 <sup>o</sup>	1000
903734	4.0 x 30	Fully threaded	7.5	TX20 <sup>o</sup>	1000
903735	4.0 x 35	Fully threaded	7.5	TX20 <sup>o</sup>	1000
903736	4.0 x 40	23	7.5	TX20 <sup>o</sup>	500
903737	4.0 x 45	25	7.5	TX20 <sup>o</sup>	500
903738	4.0 x 50	30	7.5	TX20 <sup>o</sup>	500
903739	4.0 x 60	39	7.5	TX20 <sup>o</sup>	200
903740	4.0 x 70	44	7.5	TX20 <sup>o</sup>	200
903741	4.5 x 20	Fully threaded	8.5	TX20 <sup>o</sup>	500
903742	4.5 x 25	Fully threaded	8.5	TX20 <sup>o</sup>	500
903743	4.5 x 30	Fully threaded	8.5	TX20 <sup>o</sup>	500
903744	4.5 x 35	Fully threaded	8.5	TX20 <sup>o</sup>	500
903745	4.5 x 40	23	8.5	TX20 <sup>o</sup>	500
903746	4.5 x 45	25	8.5	TX20 <sup>o</sup>	500
903747	4.5 x 50	30	8.5	TX20 <sup>o</sup>	500
903748	4.5 x 60	39	8.5	TX20 <sup>o</sup>	200
903749	4.5 x 70	44	8.5	TX20 <sup>o</sup>	200
903750	4.5 x 80	44	8.5	TX20 <sup>o</sup>	200

# PRODUCT DATA SHEET

# ECOTEC CHIPBOARD SCREW

## PRODUCT TABLE

EcoTec countersunk head, blue galvanised carbon steel					
Art. no.	Dimensions Ød x L [mm]	Thread length lg [mm]	Head diameter Ødh [mm]	Drive	PU
903751	5.0 x 20	Fully threaded	9.5	TX20	500
903752	5.0 x 25	Fully threaded	9.5	TX20	500
903753	5.0 x 30	Fully threaded	9.5	TX20	500
903754	5.0 x 35	Fully threaded	9.5	TX20	500
903755	5.0 x 40	23	9.5	TX20	200
903756	5.0 x 45	25	9.5	TX20	200
903757	5.0 x 50	30	9.5	TX20	200
903758	5.0 x 60	39	9.5	TX20	200
903759	5.0 x 70	44	9.5	TX20	200
903760	5.0 x 80	44	9.5	TX20	200
903761	5.0 x 90	54	9.5	TX20	200
903762	5.0 x 100	54	9.5	TX20	200
903763	5.0 x 120	70	9.5	TX20	200
903764	6.0 x 40	Fully threaded	11.5	TX30	200
903765	6.0 x 50	Fully threaded	11.5	TX30	200
903766	6.0 x 60	39	11.5	TX30	200
903767	6.0 x 70	44	11.5	TX30	200
903768	6.0 x 80	44	11.5	TX30	200
903769	6.0 x 90	54	11.5	TX30	100
903770	6.0 x 100	60	11.5	TX30	100
903771	6.0 x 120	70	11.5	TX30	100
903772	6.0 x 140	70	11.5	TX30	100
904540	6.0 x 160	70	11.5	TX30	100
904541	6.0 x 180	70	11.5	TX30	100
904542	6.0 x 200	70	11.5	TX30	100
904617	6.0 x 220	70	11.5	TX30	100
904618	6.0 x 240	70	11.5	TX30	100
904619	6.0 x 260	70	11.5	TX30	100
904620	6.0 x 280	70	11.5	TX30	100
904621	6.0 x 300	70	11.5	TX30	100

# PRODUCT DATA SHEET

# ECOTEC CHIPBOARD SCREW

## PRODUCT TABLE

EcoTec, stainless steel A2\*

Art. no.	Dimensions Ød x L [mm]	Thread length lg [mm]	Head diameter Ødh [mm]	Drive	PU
903824	4.0 x 30	Fully threaded	8	TX20	500
903791	4.0 x 35	24	8	TX20	1000
903792	4.0 x 40	24	8	TX20	1000
903793	4.0 x 45	30	8	TX20	500
903794	4.0 x 50	30	8	TX20	500
903795	4.0 x 60	36	8	TX20	200
903796	4.0 x 70	42	8	TX20	200
903797	4.0 x 80	48	8	TX20	200
903836	4.5 x 20	Fully threaded	9	TX20	500
903837	4.5 x 25	Fully threaded	9	TX20	500
903838	4.5 x 30	Fully threaded	9	TX20	500
903839	4.5 x 35	Fully threaded	9	TX20	500
903840	4.5 x 40	23	9	TX20	500
903798	4.5 x 45	30	9	TX20	500
903799	4.5 x 50	30	9	TX20	500
903800	4.5 x 60	36	9	TX20	200
903801	4.5 x 70	42	9	TX20	200
903802	4.5 x 80	48	9	TX20	200
903841	5.0 x 40	23	9	TX25	500
903803	5.0 x 50	30	10	TX25	200
903804	5.0 x 60	36	10	TX25	200
903805	5.0 x 70	42	10	TX25	200
903806	5.0 x 80	48	10	TX25	200
903807	5.0 x 90	54	10	TX25	200
903808	5.0 x 100	60	10	TX25	200
903809	5.0 x 120	70	10	TX25	200
903810	6.0 x 50	30	12	TX25	200
903811	6.0 x 60	36	12	TX25	200
903812	6.0 x 70	42	12	TX25	200
903813	6.0 x 80	48	12	TX25	200
903814	6.0 x 90	54	12	TX25	100
903815	6.0 x 100	70	12	TX25	100
903816	6.0 x 120	70	12	TX25	100
903817	6.0 x 140	70	12	TX25	100
903818	6.0 x 160	70	12	TX25	100
903825	6.0 x 180	70	12	TX25	100
903826	6.0 x 200	70	12	TX25	100

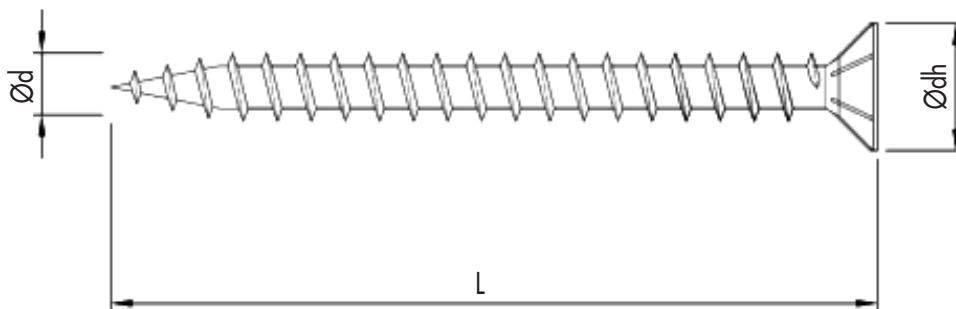
\*EcoTec A2 not regulated according to ETA-11/0024.

# PRODUCT DATA SHEET

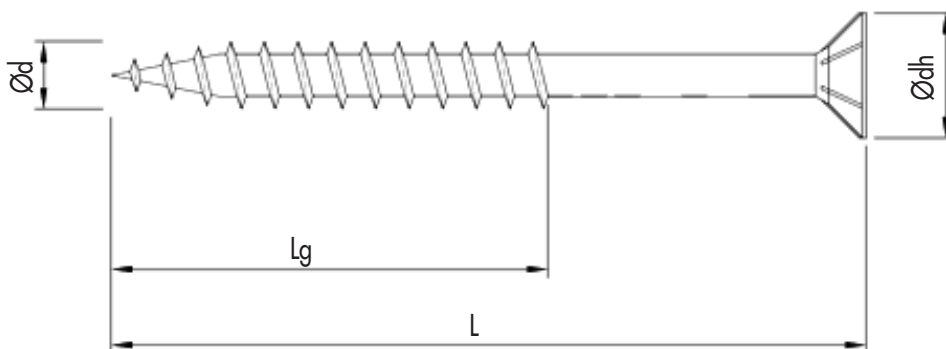
# ECOTEC CHIPBOARD SCREW

## DRAWINGS

- EcoTec countersunk head, galvanised steel, fully threaded



- EcoTec countersunk head, galvanised steel and A2, partially threaded



If you are not familiar with this product's application, and particularly with the product's intended use, please contact our Application Technology department ([technik@eurotec.team](mailto:technik@eurotec.team)).