

Product data sheet – CoverFix façade guide rail

Product description

For non-visible fastening of façade woods.



Material

- Aluminium, black

Advantages/Specifications

- Invisible screwed fastenings
- Perfect structural wood protection.
- Ventilated façade system with distance mounting
- The exposed surface of the façade wood remains undamaged.
- Simple and efficient assembly

Product table

CoverFix façade guide rail		
Art. no.	Dimensions [mm] ^{a)}	PU
975672	800 x 20 x 8	1

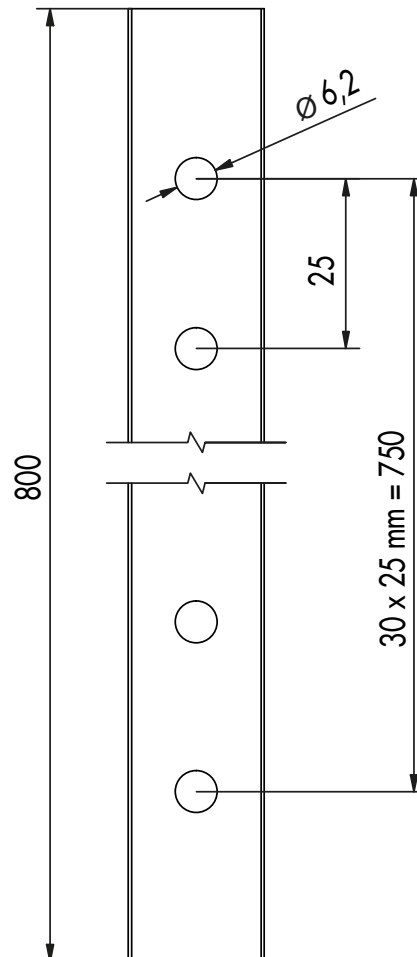
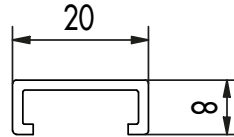
a) Length x width x depth

Installation

- Cut the CoverFix façade guide rail to the desired length.
- Place the CoverFix façade guide rail on the back of the façade wood and insert mounting screws.
- Repeat the process on every further façade wood element in an offset manner.
- Fasten the façade wood element to the counter batten with fixing screws.
- Fix the next façade wood element, observing the distance between the individual elements. Finished!

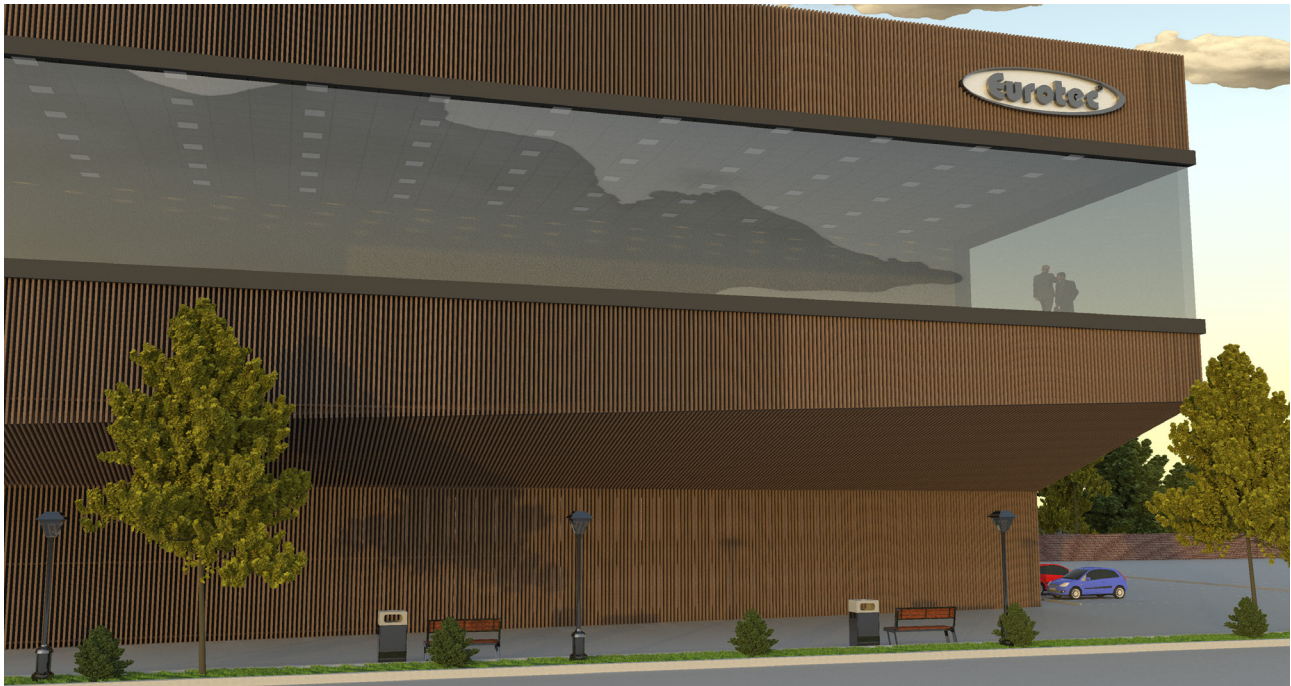
Product data sheet – CoverFix façade guide rail

Drawings



Product data sheet – CoverFix façade guide rail

Application image



If you are not familiar with how this product is used, and particularly with the product's intended use, please contact our Application Technology department (Technik@eurotec.team).