

PRODUCT DATA SHEET

LOAD BRACKET

PRODUCT DESCRIPTION

Especially when using **lightweight terrace decking** like WPC boards, **bending and warping** can occur due to waterlogging or heat build-up. With the help of our load bracket, additional loads in the form of e.g. heavy stone slabs can be added within the **substructure to counteract potential warping**.



NOTE

Always include at least 4 brackets per stone!



ADVANTAGES

- Prevents potential deformation or warping of the terrace
- Helps to secure the terrace's position
- Compatible with our EVO system profile and our HKP support system

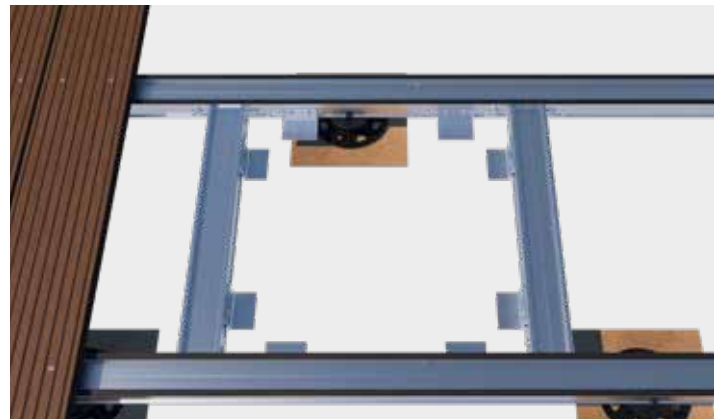
MATERIAL

- Aluminium

IMAGES OF APPLICATIONS



The load bracket can be flexibly attached along the length of the aluminium profile and is fastened laterally with 2 BiGHTY screws.



The required number of load brackets varies with the size of the selected stone slab.

PRODUCT DATA SHEET

LOAD BRACKET



The inserted stone disappears completely between the aluminium substructure and is no longer visible when the terrace is finished.



ASSEMBLY NOTE

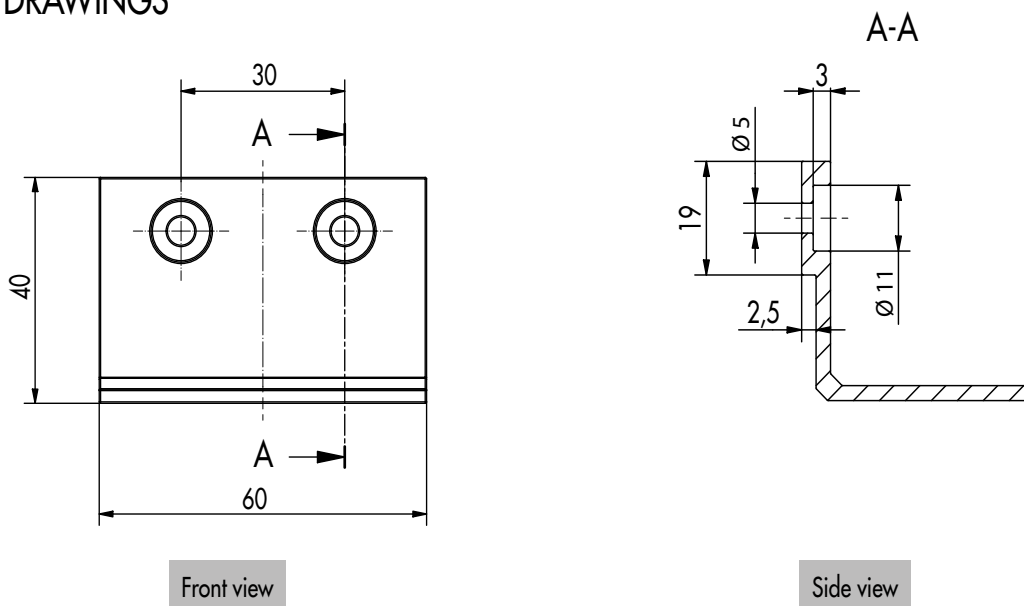
We advise using our 954068 BiGHTY drilling screw to fix the brackets to the profiles.

PRODUCT TABLE

Art.-No.	Product description	Dimensions ¹⁾ [mm]	PU
945061	Load bracket	40 x 60 x 40	10

¹⁾Height x width x depth

DRAWINGS



If you are not familiar with how this product is used, and particularly with the product's intended use, please contact our Application Technology department (technik@eurotec.team).