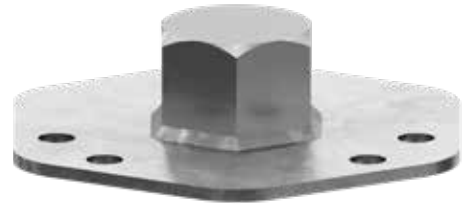


PRODUCT DATA SHEET

SOCKET ADAPTER

PRODUCT DESCRIPTION

This adapter enables the mechanical installation of 60-series screw foundations using standard screw-driving machines. It is attached to the top of the screw foundation and allows torque to be transmitted via a socket (41 mm). The adapter is secured to the screw foundation with three screws and nuts, allowing it to be used safely by a single person.



SPECIFICATIONS

- Enables automated screwdriving
- Reduced effort
- Can be installed by one person
- Precise grip thanks to a 3-point mounting system and a centering pin
- Compatible with the entire 60 series of screw foundations
- Adapter mount/connection: 41 mm socket
- **Mounting:**
 - 3 sets of bolts and nuts (with a bolt pattern compatible with the 60 series)
 - Min. motor power: 700 W

MATERIAL

- Steel

OPERATING PRINCIPLE

1. Place the adapter on top of the 60 mm screw foundation.
2. Secure it using screws and nuts through the 3 holes.
3. Attach the 41-mm socket to the screwdriver.
4. Position the screwdriver and drive the foundation into place.
5. It is recommended that you check the alignment regularly.

WHAT'S INCLUDED

- 1 x Socket adapter
- 3 x mounting screws
- 3 x nuts

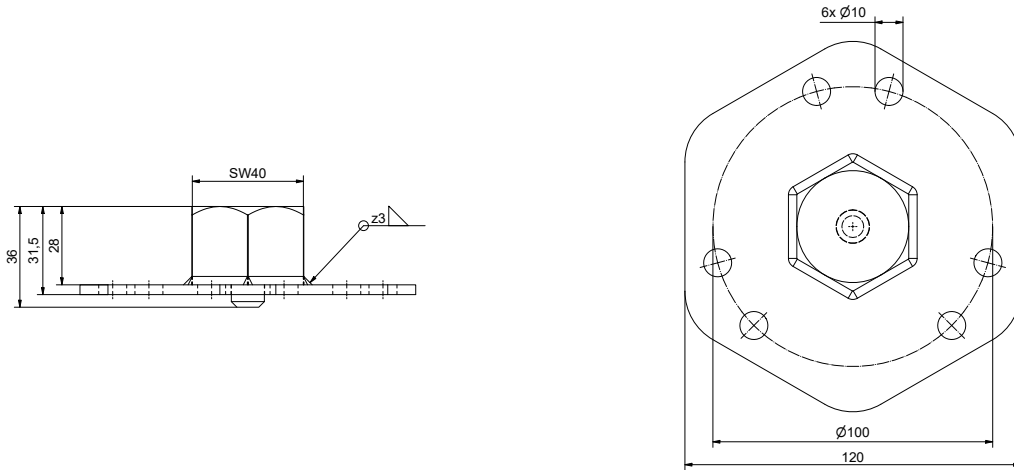
PRODUCT TABLE

Art. no.	L ₁ (Height) [mm]	L ₂ (Width) [mm]	L ₃ (Depth) [mm]	Material thickness [mm]	Drilling [mm]	PU
800605	36	133	120	3,5	6 x Ø 10	1

PRODUCT DATA SHEET

SOCKET ADAPTER

TECHNICAL INFORMATION



If you are unfamiliar with the application of this product, particularly its intended use, please be sure to contact our Application Engineering department (technik@eurotec.team).