

PRODUCT DATA SHEET

PRODUCT DESCRIPTION

The Eurotec EVOdry water drainage system helps to drain water from balcony and deck substructures in a targeted manner. It is mainly used on decks attached to houses and flats with several floors. EVOdry is a comprehensive product that is compatible with both traditional timber and plastic decking boards, offers a whole **new dimension of freedom** during the design phase, and can also be considered when renovating existing balconies. The system **completely seals the substructure towards the bottom, preventing uncontrolled water run-off to floors below.**

The system consists of the EVOdry rail, the EVOdry holder and the EVOdry closure. The EVOdry rail is **used to drain the water under the wooden deck** and is fixed in place using the EVOdry holder to prevent it from slipping. The EVOdry closure can be attached on one side and **ensures that the water runs specifically into a gutter or a similar structure.**

ADVANTAGES

- Targeted drainage of water
- Protection of the substructure against moisture, dirt and vegetation growth
- Longer service life of the substructure

MATERIAL

- EVOdry rail: Aluminium, black
- EVOdry holder: Plastic, black
- EVOdry closure: Aluminium
- EVOdry clips: Plastic/A2, black
- EVOdry sealing tape: TPE-S, black

EVOdry WATER DRAINAGE SYSTEM

EVOdry rail



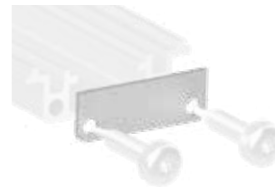
EVOdry holder



The EVOdry holder fixes the EVOdry rail in place so that it does not slip.*

*If the connection is concealed, the EVOdry holder can be secured using the Inox profile drilling screw (length of 41 mm).

EVOdry closure



The EVOdry closure can be fitted on one side and ensures that the water is directed into a gutter, for example.

EVOdry clip, straight

EVOdry clip, bent



USE LOW TORQUE



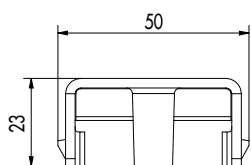
The straight/bent EVOdry clip is used for concealed fastening of the decking boards in the EVO Dry rail.

PRODUCT DATA SHEET

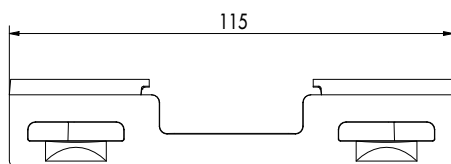
EVODRY WATER DRAINAGE SYSTEM

TECHNICAL INFORMATION

EVODry holder

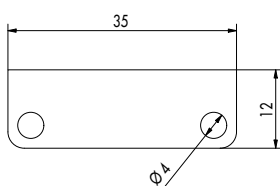


Front view

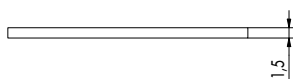


Side view

EVODry closure

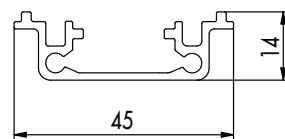


Front view



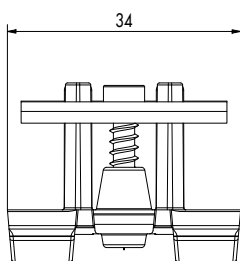
Top view

EVODry rail

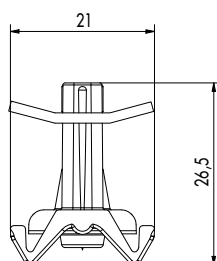


Front view

EVODry clip, bent

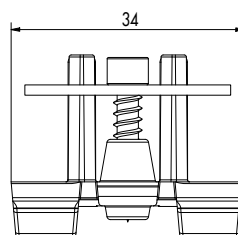


Front view

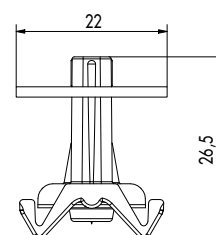


Top view

EVODry clip, straight



Front view

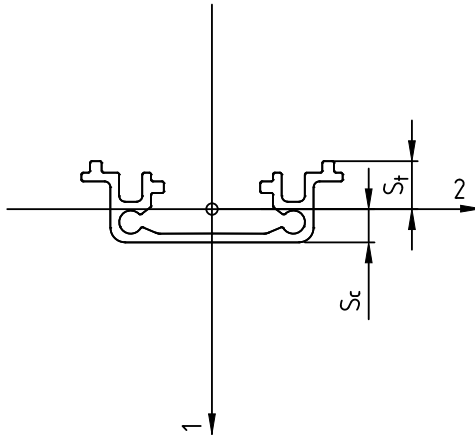


Top view

PRODUCT DATA SHEET

EVODRY WATER DRAINAGE SYSTEM

EVODry rail



l1 [mm ⁴]	l2 [mm ⁴]	Sc [mm]	Sf [mm]	A [mm ²]
30159,6	2925,61	5,72	8,27	154,92

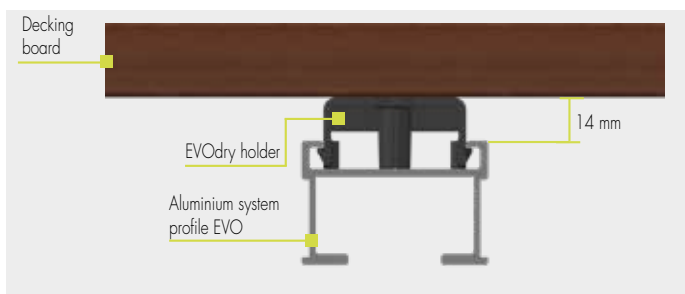
EVODRY CLIPS

EVODry clips is suitable for boards with the following groove geometry:

- Straight stainless steel plate for straight groove geometry:
 - Groove depth, D: $\geq 7,5$ mm
 - Groove width, W: $\geq 2,0$ mm
 - Groove wall thickness, T: $\geq 7,0 - 8,0$ mm
- Curved stainless steel plate for curved groove geometry:
 - Groove depth, D: $\geq 7,5$ mm
 - Groove width, W: $\geq 4,0$ mm
 - Groove wall thickness, T: $\geq 7,0 - 8,0$ mm



DESIGN



Note

The rails can be joined at joints using AUTOWELD's two-component adhesive for cold welding.

PRODUCT DATA SHEET

EVODRY WATER DRAINAGE SYSTEM

FASTENING OPTIONS



Concealed fastening with bent clip.



Concealed fastening with straight clip.



Visible fastening



Note

You will find detailed assembly instructions on our website.



Visible fastening recommendation:

- Plank: min. 21 mm – max. 26 mm
- Screw: Profile drill screw L = 61 mm
(depending on wood type, item 905360 or 905565)

PRODUCT DATA SHEET

EVODRY WATER DRAINAGE SYSTEM

PRODUCT TABLE

EVODry water drainage system			
Art. no.	Designation	Dimensions ¹⁾ [mm]	PU
975681	EVODry rail	14 x 45 x 4000	1
975682	EVODry closure**	12 x 1,5 x 35	10
975683	EVODry holder	23 x 50 x 115	10
975693	EVODry clip, straight	26,5 x 22 x 34	100
975696	EVODry clip, bent	26,5 x 21 x 34	100
100547*	EVODry sealing tape	50000	1

¹⁾ Height x width x length

* The EVODry sealing tape (100547) is not included in the scope of delivery.

** Screws are included in the scope of delivery.

If you are not familiar with how this product is used, and particularly with the product's intended use, please contact our Application Technology department (technik@eurotec.team).