

PRODUCT DATA SHEET

PRODUCT DESCRIPTION

Eurotec's TERRA Aluminium System Profiles are a modular system for constructing aluminium decking substructures. The modular system includes everything required for decking construction and can be used in combination with our Profi-Line and BASE-Line adjustable feet.

The TERRA system profiles are used as aluminium substructure profiles for decking construction. Compatible with the various versions of the aluminium system profiles, the modular system also includes angle and profile connectors as well as flexible joints for installation at 90° and 180° angles. In this way, the modular system can be used to create a stable and long-lasting terrace substructure.

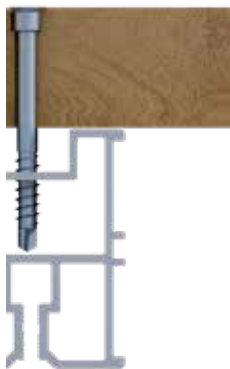
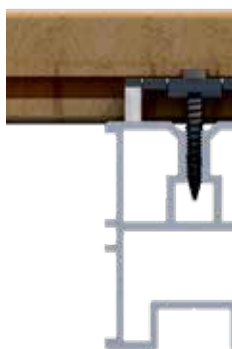
MATERIAL

- Aluminium

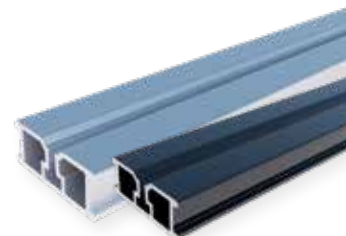
i NOTE

If the profiles are used in combination with products for concealed decking fastening, they should be positioned with the screw channel facing upwards.

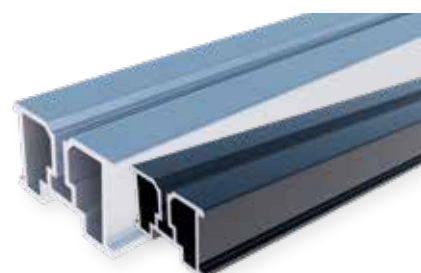
If you wish to fix the decking boards directly to the profiles using screws, turn the profile so that the underside is facing upwards. This ensures that the special geometry of the profiles allows sufficient room for the screw to move, thereby reducing the risk of breakage.



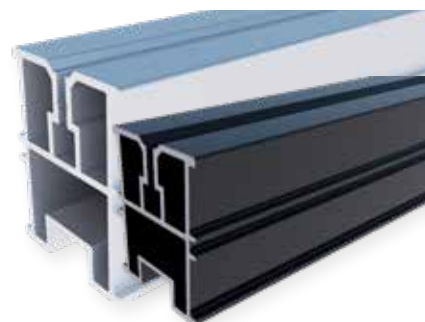
TERRA ALUMINIUM SYSTEM PROFILES



TERRA Aluminium System Profile H15



TERRA Aluminium System Profile H24



TERRA Aluminium System Profile H50

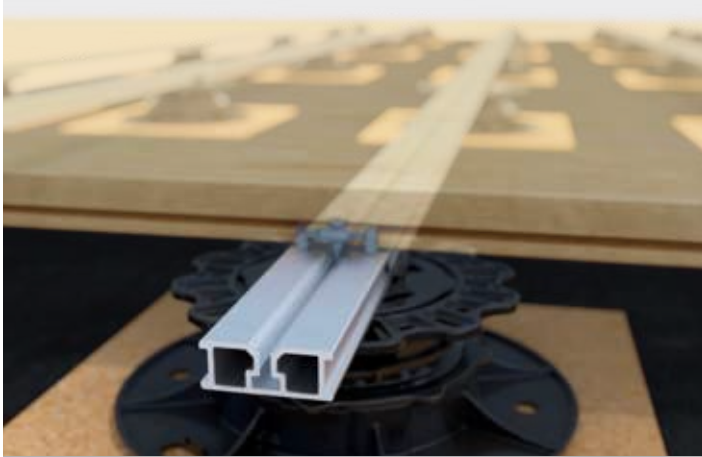


TERRA Aluminium System Profile H85

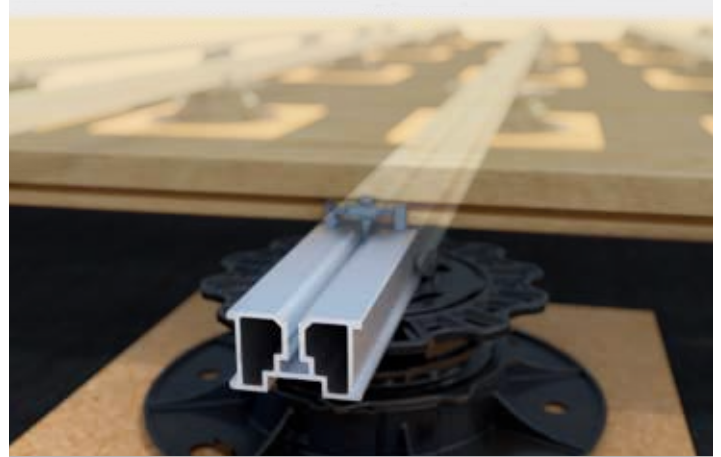
PRODUCT DATA SHEET

TERRA ALUMINIUM SYSTEM PROFILES

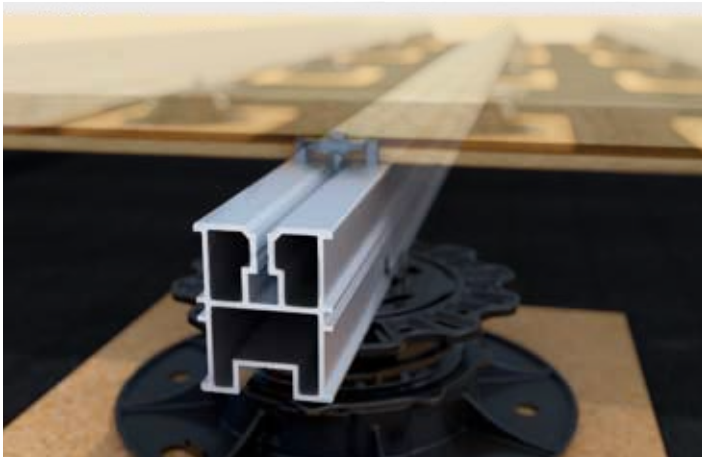
APPLICATION IMAGEER – CONCEALED FIXING



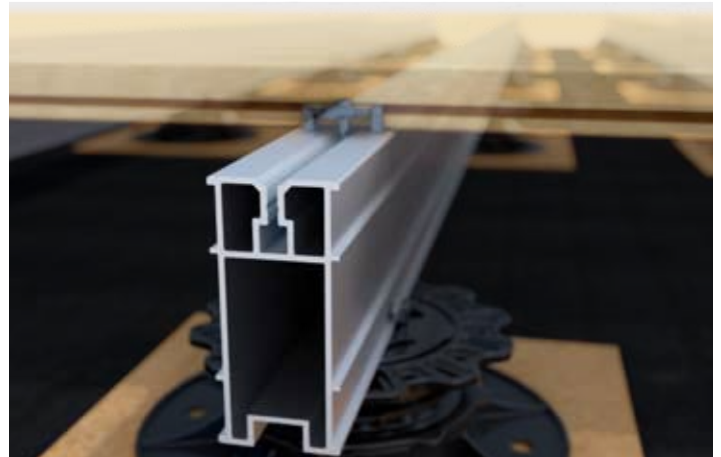
Example of use TERRA Aluminium System Profile H15



Example of use TERRA Aluminium System Profile H24



Example of use TERRA Aluminium System Profile H50

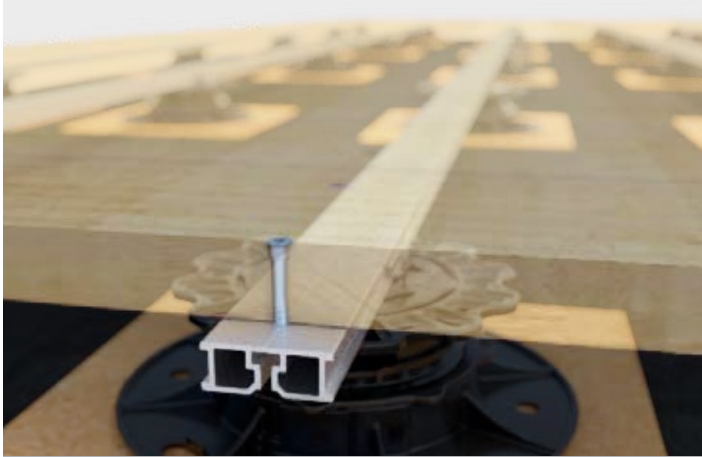


Example of use TERRA Aluminium System Profile H85

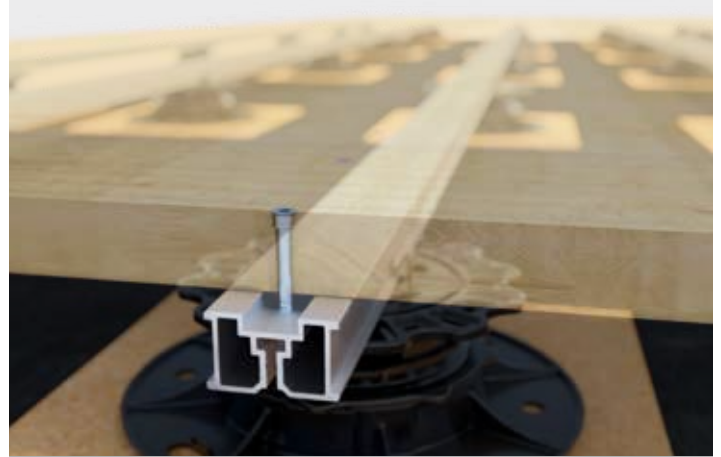
PRODUCT DATA SHEET

TERRA ALUMINIUM SYSTEM PROFILES

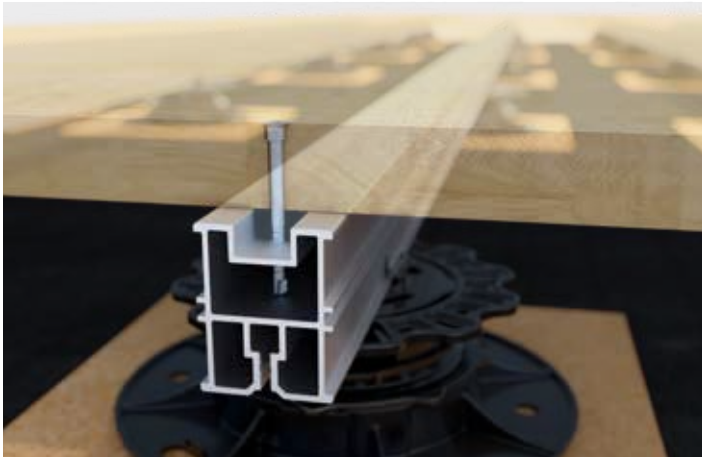
APPLICATION IMAGEER – VISIBLE FASTENING



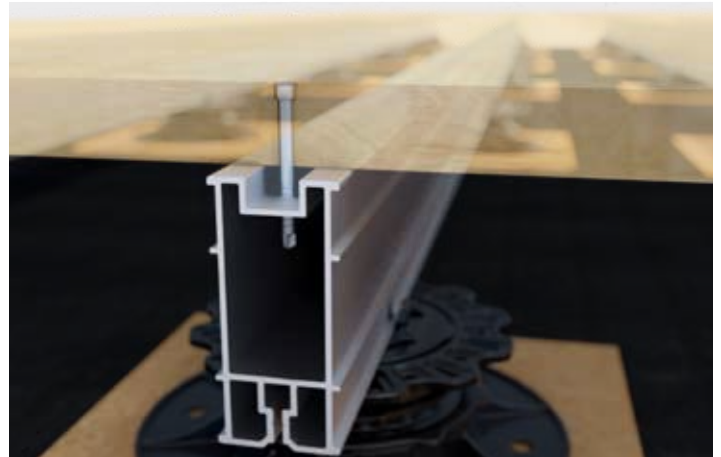
Example of use TERRA Aluminium System Profile H15



Example of use TERRA Aluminium System Profile H24



Example of use TERRA Aluminium System Profile H50



Example of use TERRA Aluminium System Profile H85

PRODUCT DATA SHEET

TERRA ALUMINIUM SYSTEM PROFILES

PRODUCT TABLEN

TERRA Aluminium System Profile H15				
Art. no.	Dimensions ^{o)} [mm]	Colour	Material	PU
975541	15 x 40 x 4000	-	Aluminium	1
975542	15 x 40 x 4000	black	Aluminium	1

TERRA Aluminium System Profile H24				
Art. no.	Dimensions ^{o)} [mm]	Colour	Material	PU
975543	24 x 40 x 4000	-	Aluminium	1
975549	24 x 40 x 2000	-	Aluminium	1

TERRA Aluminium System Profile H50				
Art. no.	Dimensions ^{o)} [mm]	Colour	Material	PU
975545	50 x 40 x 4000	-	Aluminium	1
975546	50 x 40 x 4000	black	Aluminium	1

TERRA Aluminium System Profile H85				
Art. no.	Dimensions ^{o)} [mm]	Colour	Material	PU
975547	85 x 40 x 4000	-	Aluminium	1

^{o)}Height x length x width

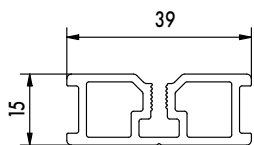
DRAWINGS

• TERRA Aluminium System Profile H15

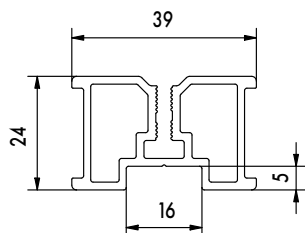
• TERRA Aluminium System Profile H24

• TERRA Aluminium System Profile H50

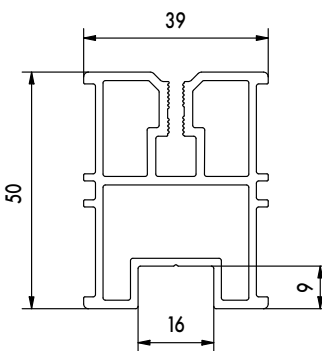
• TERRA Aluminium System Profile H85



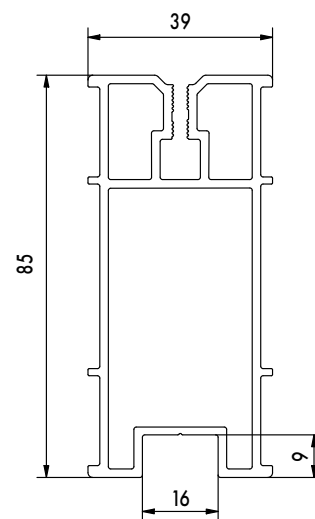
Side view



Side view



Side view



Side view

If you are not familiar with how this product is used, and particularly with the product's intended use, please contact our Application Technology department (Technik@eurotec.team).