

PRODUCT DATA SHEET

L-ADAPTER BASIC

PRODUCT DESCRIPTION

The Eurotec L-Adapter Basic serves as a connecting element between the screw foundation and the substructure. It is available in two versions: with an M12 threaded rod for the 60 series, and with an M24 threaded rod for the 76, 89, and 114 series.

Thanks to the adapter's 360° rotation, the substructure can be optimally positioned regardless of its orientation. After aligning the substructure on the base plate, the mounting arm can be flexibly adjusted to the specific position of the substructure, freely positioned, and then securely bolted in place.



SPECIFICATIONS

- High installation flexibility thanks to 360° rotation
- Compatible with M12 and M24 bases
- Sturdy steel construction
- Easy on-site adjustment
- Screw-in connection via a threaded rod (M12 or M24, depending on the model)
- Suitable for custom system solutions
- Cost-effective solution

MATERIAL

- S235JR steel in accordance with EN 10025-2
- Hot-dip galvanized

MECHANICAL PROPERTIES

Parameter	Value
Yield strength R_e	≥ 235 MPa
Tensile strength R_m	360–510 MPa
Modulus of elasticity	ca. 210.000 MPa
Density	7,85 g/cm ³

APPLICATIONS

- Photovoltaic mounting systems
- Outdoor structures
- Lightweight structures
- Custom outdoor structures

SAFETY INSTRUCTIONS

- Installation must be performed only by qualified professionals
- Use personal protective equipment
- Observe load limits
- Do not install any damaged components

INSTALLATION INSTRUCTIONS

1. Check that the screw foundation is properly seated and plumb.
2. Screw the threaded rod of the L-adapter into the female thread of the foundation.
3. Screw the adapter in to the desired height.
4. Secure the position with a lock nut.
5. Place the L-bracket against the wooden beam and secure it with a nut.
6. Screw the post connector screws into the designated holes to secure the substructure to the adapter.

PRODUCT DATA SHEET

L-ADAPTER BASIC

DESIGN AND CONSTRUCTION

The L-adapter consists of an L-shaped steel profile with a welded or integrated threaded rod.

This design enables a load-bearing connection while offering high installation flexibility.

Swivel mount:
For 360° adjustment of the mounting bracket

Central threaded rod:
For a force-fit connection in the foundation



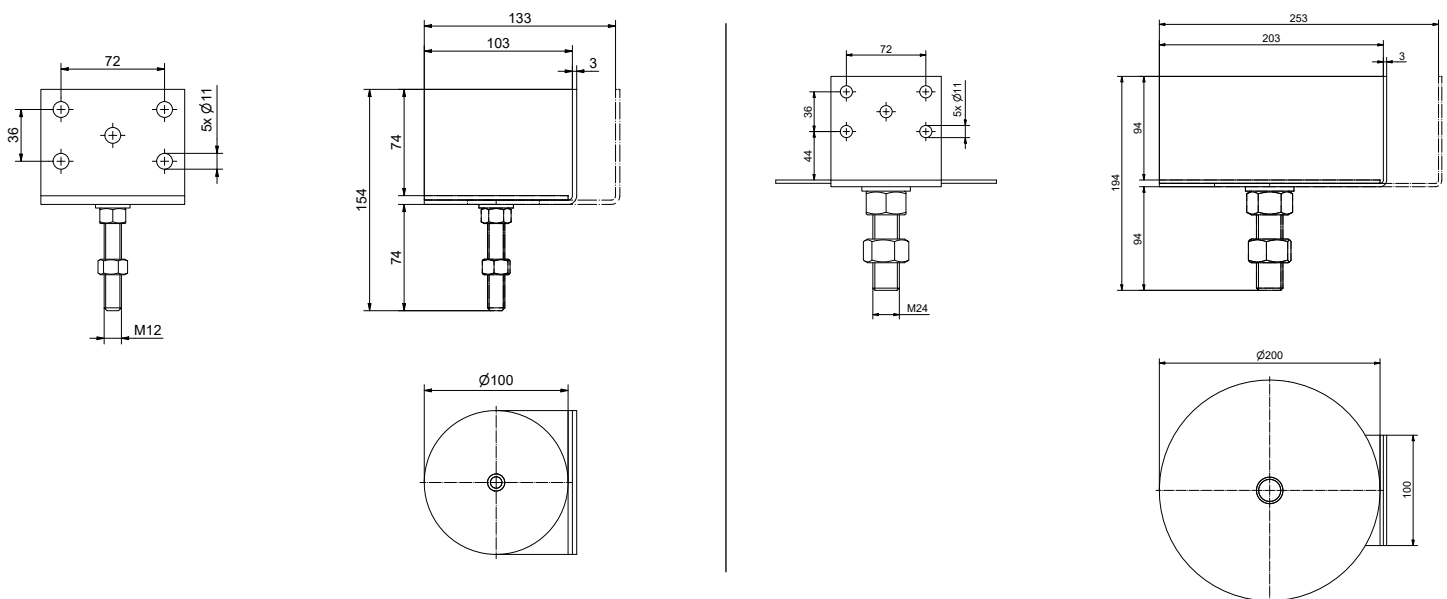
Vertical leg:
Connection to the substructure

Horizontal leg:
Installation of the substructure

PRODUCT TABLE

Art. no.	Description	L ₁ (Height) [mm]	L ₂ (Width) [mm]	L ₃ (Depth) [mm]	Material thickness [mm]	Thread	Ø Plate [mm]	Drilling [mm]	Installation height [mm]	PU
800606	Basic 12	154	100	106	3	M12	100	5 x Ø 11	31-58	1
800607	Basic 24	194	200	206	3	M24	200	5 x Ø 11	50-75	1

TECHNICAL INFORMATION



If you are unfamiliar with the application of this product, particularly its intended use, please be sure to contact our Application Engineering department (technik@eurotec.team).