

PRODUCT DATA SHEET

3D FAÇADE SPACER

PRODUCT DESCRIPTION

Thanks to Eurotec's 3D façade spacer and the resulting innovative decoupling of the individual components, the weathering process is reduced to a minimum. This significantly extends the façade's lifespan. The 3D façade spacer is attached to the façade and then screwed to the substructure along with the façade. Air circulating between the substructure and façade ensures optimal ventilation. Furthermore, thanks to the spacer's special geometry, water, e.g. condensate, is able to drain perfectly. The spacer comes with 4 screw holes that can be used individually to connect it to the façade.



APPLICATIONS

- 3D façade

**Suitable
for**

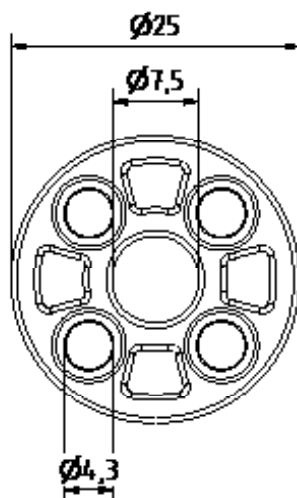


Hobotec

MATERIAL

- PPC, black

TECHNICAL INFORMATION



Front view



Side view

PRODUCT DATA SHEET

3D FAÇADE SPACER

PRODUCT TABLE

3D façade spacer		
Art. no.	Dimensions ^{a)} [mm]	PU
945360	25 x 7	100
a) length x width		

If you are not familiar with how this product is used, and particularly with the product's intended use, please contact our Application Technology department (Technik@eurotec.team).