

PRODUCT DATA SHEET

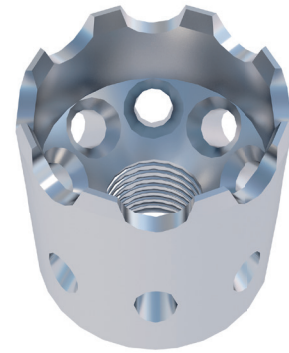
IDEEFIX WOOD CONNECTORS

PRODUCT DESCRIPTION

The IdeeFix wood connector is used to **create hidden wood connections** for single- or multiple-row serial connections in wood-wood connections. It ensures **high load-bearing capacity** for tensile and transverse forces, is designed for universal use and is **quick and easy to mount**.

ADVANTAGES

- High load-bearing capacity for tensile and transverse loads
- Adjustable tension/detachable
- Universal application
- Low wood-weakening effect
- For single- or multi-row series connections
- High pull-out resistance
- Strong connection
- Maximisation of the load-bearing capacity
- Time and cost-saving alternative
- Concealed connections
- No pre-drilling required for screwed according to approval/ETA (recommended for screw lengths > 245 mm)



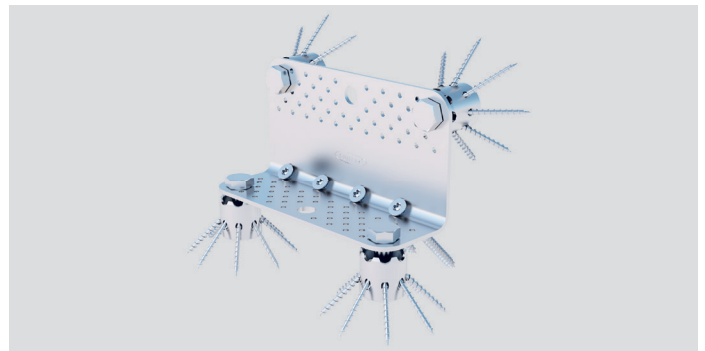
NOTE

Only for use in timber structures in service class 1 and 2 (protected from direct weathering).

IMAGES OF APPLICATIONS



Application of IdeeFix to connect the support and beam girder.



System angle CLT with IdeeFix

PRODUCT DATA SHEET

IDEEFIX WOOD CONNECTORS

APPROVAL

- Regulated by European Technical Assessment ETA-14/0160



PRODUCT TABLE

Art. no.	Designation	Diameter/Height [mm]	PU
945390	IdeeFix 30 wood connector	30	25
944890	IdeeFix 40 wood connector	40	25
944896	IdeeFix 50 wood connector	50	25



INSTRUCTIONS FOR USE

Pre-drill the wood for the IdeeFix. Then insert the IdeeFix into the drill hole without screws. Then, thanks to the low splitting effect of the screws, you can insert them without further pre-drilling. In the middle of the IdeeFix is a thread in which another screw can be inserted.

If you are not familiar with how this product is used, and particularly with the product's intended use, please contact our Application Technology department (technik@eurotec.team).