

Product data sheet – Tension rod HT

Product description

The **Tension rod HT** is a molded steel part, especially for timber frame constructions. It allows for an easy fixing of wood elements in wood, steel or concrete subsurfaces. The tension rod is very solid and is able to resist extreme loads.

The installation is relatively simple. The fastener is placed in the floor area on the planking and fastened with screws to the upright piece and at the threshold. The connection is able to safely transfer tensile, suction and shear forces via the screws into the tie rod and finally via the dowel into the base plate.

Advantages

- Short root face (150 mm)
- Tensile forces up to 42 kN
- Optimized screw pattern for bearer support
- High loading capacity
- Concealed fastening via barrier sheet (e.g. OSB)

Application notes

Fasteners: Angle-bracket screw ETA-11 /0024 and multi plug

The minimal values for dowel/bolts ($F_{B,t,Ed}$) correspond with the values of the tensile load F_{Rd}

Maximum threshold height: 150 mm taking into account the distances to the head grain edge according to EC5

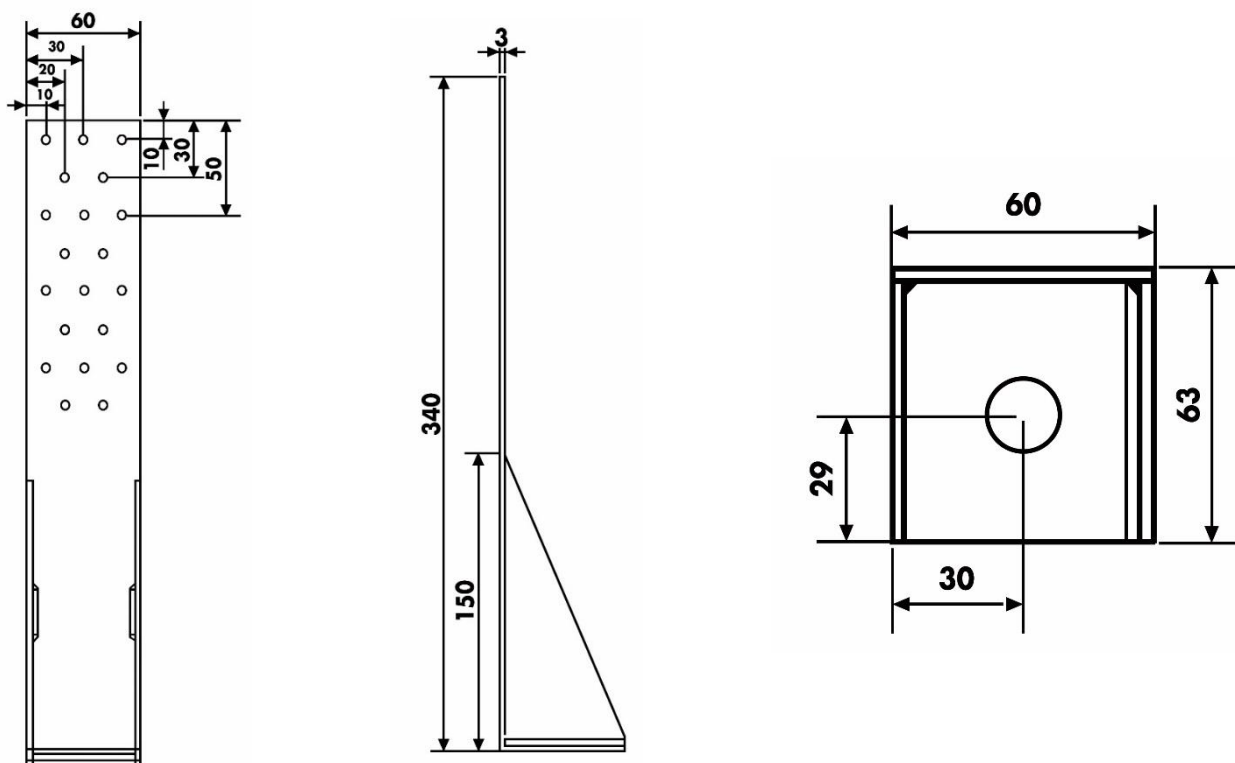


Product data sheet – Tension rod HT

Article table

Sustainability						4x40 5x40		4x50 5x50		4x60 5x60		
Art. No.	Name	Dimensions [mm]	n ¹	n ²		min.	F _Z	min.	F _Z	min.	F _Z	
		H x L x W x D	Ø 5,0	Ø	KLED	nNails/Screws	[kN]	nNails/Screws	[kN]	nNails/Screws	[kN]	k _t
954091	Tension rod HT 16	340 x 63 x 60 x 3	20	1x17	short	20	26,2	20	29,5	20	31,4	1,0
					very short	20	32,0	20	36,1	20	38,3	
					charac.	20	37,8	20	42,0	19	42,0	
954092	Tension rod HT 22	440 x 63 x 60 x 3	30	1x17	short	30	39,3	29	42,0	27	42,0	1,0
					very short	27	42,0	24	42,0	22	42,0	
					charac.	23	42,0	20	42,0	19	42,0	
954093	Tension rod HT 28	540 x 63 x 60 x 3	45	1x17	short	33	42,0	29	42,0	27	42,0	1,0
					very short	27	42,0	24	42,0	22	42,0	
					charac.	23	42,0	20	42,0	19	42,0	
954094	Tension rod HT 34	620 x 83 x 80 x 3	55	1x22	short	33	42,0	29	42,0	27	42,0	1,0
					very short	27	42,0	24	42,0	22	42,0	
					charac.	23	42,0	20	42,0	19	42,0	

Drawing



If you are not familiar with the application of the product at hand, especially with the handling according to given regulations, it is essential to get in contact with our technical application support department (Technik@eurotec.team).