

# PRODUCT DATA SHEET

## T-STICK

### PRODUCT DESCRIPTION

The T-Stick is inserted between two wooden boards and fastened in the board groove with a steel plate. The result is an attractive wood surface without visible screw heads. **The board clearance is maintained automatically by the T-Stick.** The clearance of approx. 9 mm to the substructure enables **good ventilation underneath**, which prevents waterlogging. The **service life is thus positively affected.**

When Eurotec's laying specifications are complied with, the T-Stick enables the **boards to be adjusted** easily before they are screwed down firmly. After screwing, the boards are absolutely firm. If a board has to be replaced, this system makes this possible even **after the deck has been completed.**



### ADVANTAGES

- Indirect / hidden fastening solution
- Individual boards can be adjusted and replaced at any time.
- Compatible with classic wooden substructures and our modern aluminium system profile and the HKP deck support system
- Uniform board clearance of 6 mm
- Supports structural wood preservation
- Weather-resistant

### APPLICATION IMAGE



The T-Stick ensures uniform board clearance.

### MATERIAL

- The T-Stick consists of a fiberglass-reinforced, weather-resistant plastic cross with stainless steel plate plus stainless steel screw.

# PRODUCT DATA SHEET

## T-STICK

### PRODUCT TABLE

Art. no.	Product description	Material	Stainless steel plate*	VPE**
111857	T-Stick	Plastic, black	A2	125
	Drilling screw	Stainless steel hardened 1.4006, black		

\*Stainless steel plate in A4 available on request

\*\*Supplied with a drilling screw Ø 4,2 x 43 TX15, which is suitable for wooden and aluminium substructures measuring up to 3 mm thick.

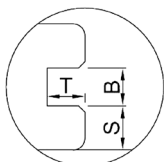
### GROOVE GEOMETRY

The T-Stick is suitable for boards with the following groove geometry:

Groove depth D:	Groove width W:	Groove wall thickness T:
≥ 7,5 mm	≥ 2,5 mm	≥ 5,5 - 12,5 mm

If necessary, the suitability of the wood type must be determined by the manufacturer / wood supplier.

- Groove depth T: ≥ 7,5 mm
- Groove width B: ≥ 2,5 mm
- Groove cheek thickness S: ≥ 5,5 - 12,5 mm



### NOTE

Only suitable for low-movement wood and WPC.

There are two design variants:

- 1) **Plate in A2 stainless steel** for normal outdoor use.
- 2) **Plate in A4 stainless steel** for environments containing chlorine and salt water (e.g. seawater) as well as for woods with increased tannic acid content (e.g. robinia, oak).

### USE

Use of the T-Stick is not recommended for wood with a high bulk density and/or high swelling and shrinkage and only moderate resilience (dimensional stability).

This particularly applies to the cumaru, macaranduba and robinia (false acacia) wood types. When selecting the wood, special attention should also be paid to good grading of the cut (e.g. sorting out boards that are interspersed with rotational growth and what are known as 'flader boards'), as well as good conditioning (adjustment of the equilibrium moisture content) of the decking boards.

**If necessary, the suitability of the wood type must be determined by the manufacturer / wood supplier.**

# PRODUCT DATA SHEET

## T-STICK

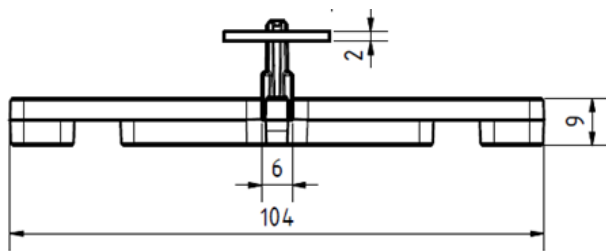
### TORQUE



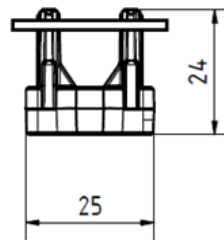
**USE LOW TORQUE**

Excessive torque can cause damage to or malfunction of the connection. So make sure that you adjust the torque setting and switch off the impact function on your screwdriver.

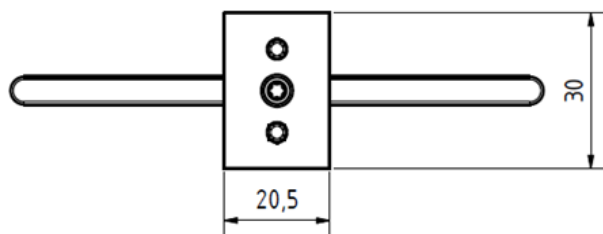
### DRAWINGS



Side view



Front view



Top view

If you are not familiar with how to use this product, especially with its intended use, get in touch with our Application Engineering Department ([technik@eurotec.team](mailto:technik@eurotec.team)).