

PRODUCT DATA SHEET

SHEAR WALL CONNECTOR

PRODUCT DESCRIPTION

The shear wall connector compensates for slight height differences between the walls. The flatness of the connector offers the perfect shape for this purpose. The screw connection also pulls both walls to the connector horizontally, thus straightening out slight unevenness here as well.



ADVANTAGES

- Allows for a high shear force transmission between the wall elements
- Compensates for unevenness between the components
- Does not protrude from the wall

MATERIAL

- Cast steel

Suitable for



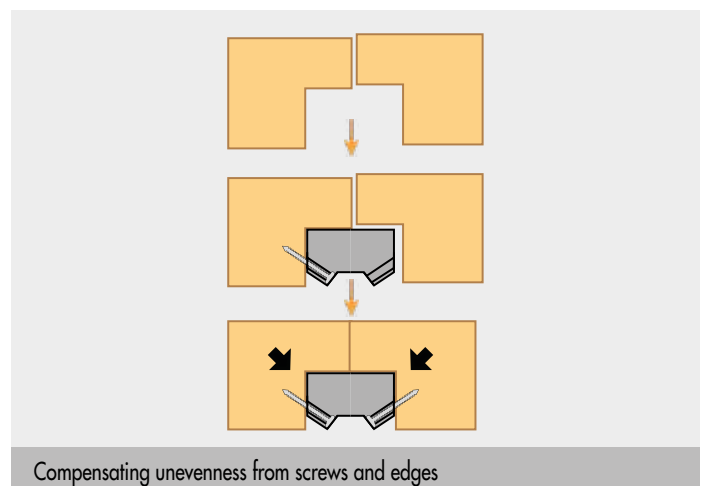
KonstruX ST SK Ø 8.0 mm

Scope of delivery including screws

IMAGES OF APPLICATIONS



Shear wall connector to secure two walls to each other.



Compensating unevenness from screws and edges

PRODUCT DATA SHEET

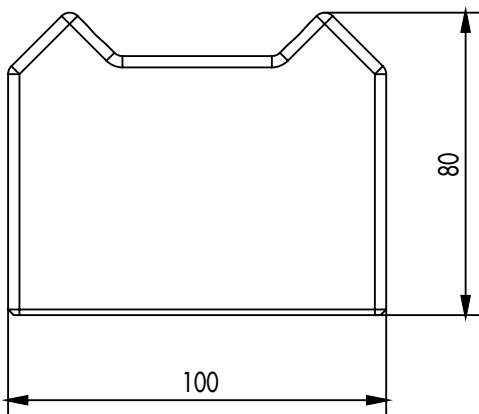
SHEAR WALL CONNECTOR

PRODUCT TABLE

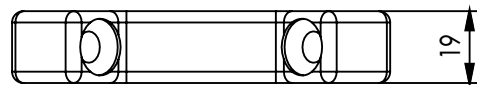
Art. no.	Dimensions ¹⁾ [mm]	Material	PU
800312	100 x 19 x 80	Cast steel	1

¹⁾Width x height x depth

DRAWINGS



Top view



Front view

If you are not familiar with how to use this product, especially with its intended use, get in touch with our Application Engineering department (technik@eurotec.team).