

PRODUCT DATA SHEET

90° PROFILE CONNECTOR

PRODUCT DESCRIPTION

The 90° profile connector is **used to create a 90° angle** in connection with the EVO, EVO Light or Eveco aluminium system profiles. It is placed in the groove of the profiles, **thereby preventing slipping** during the screwing process. In contrast to other angles, the 90° profile connector can simply be **screwed onto the outside of the profile** and does not have to be mounted on the inside. In conjunction with the Eveco corner connector, **it provides safety and additional support**.



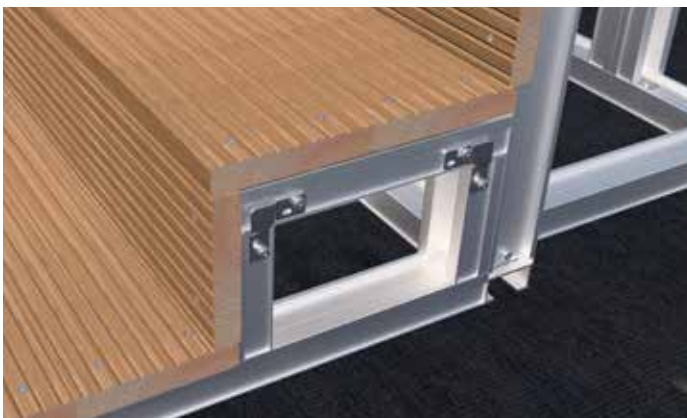
ADVANTAGES / SPECIFICATIONS

- Simple and time-saving installation compared to alternative fastening options, as the 90° profile connector can be screwed onto the profile from the outside.
- Flexible use
- Resistant to corrosion

MATERIAL

- Steel, hot-dip galvanised

IMAGES OF APPLICATIONS



90° profile connector for connecting two EVO aluminium system profiles.



Application example 90° profile connector

PRODUCT DATA SHEET

90° PROFILE CONNECTOR

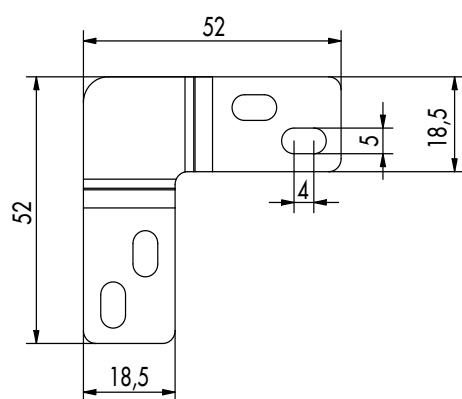
PRODUCT TABLE

Art.-No.	Product description	Dimensions ^{a)} [mm]	Material thickness [mm]	Material	PU*
944912	90° profile connector	52 x 52 x 18,5	2,5	Steel, hot-dip galvanised	10

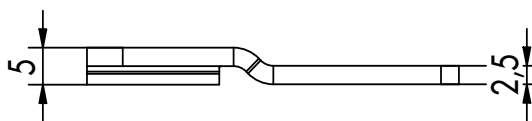
^{a)}Height x width x depth

*Delivery includes screws.

DRAWINGS



Front view



Side view

If you are not familiar with how this product is used, and particularly with the product's intended use, please contact our Application Technology department (technik@eurotec.team).