

# PRODUCT DATA SHEET

## TERRA EDGE FINISH SINGLE SUPPORT

### PRODUCT DESCRIPTION

The Eurotec **TERRA Edge finish single support** is a simple, top quality way of forming edge finishes **for stone decks with individual support**.

The set is made up of **two stainless steel profiles**, one of which is placed on top of the adjustable foot and one underneath it, so that the **cut slabs are bordered at the top and bottom**. For this to work, the stones must be **cut to the desired height** and then inserted **between the frames**.

The TERRA Edge finish single support can be combined with the Eurotec **adjustable feet professional line S – XL**, along with **GIANT S – XL**.

### ADVANTAGES

- Simple assembly – no screws or drilling required
- Top quality stainless steel edge support – no danger of corrosion
- Frames help prevent subsequent slipping of the stone slabs.

### MATERIAL

- 1.4016 according to EN 10088

### APPLICATION IMAGE



Both individual parts are placed under and on top of the adjustable foot GIANT.



Both individual parts are placed under and on top of the adjustable foot PRO.

PRODUCT DATA SHEET

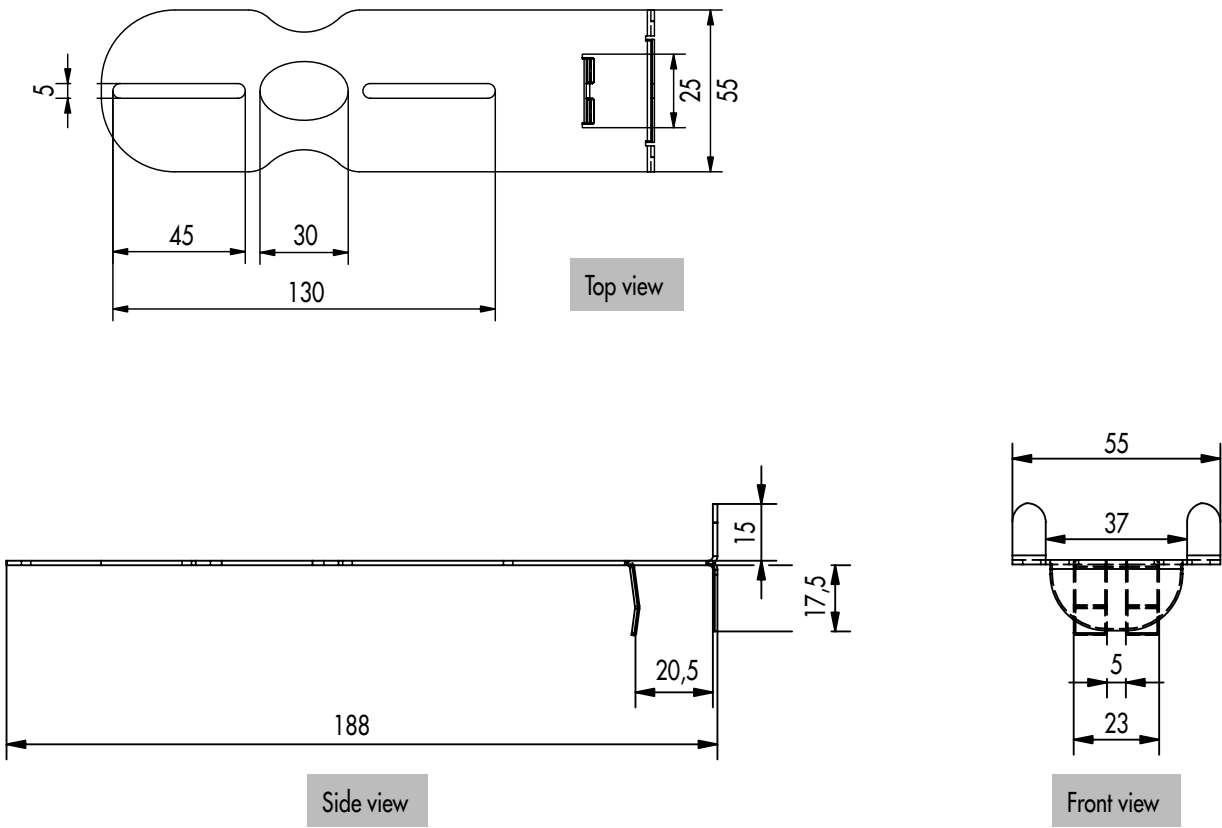
TERRA EDGE FINISH SINGLE SUPPORT

PRODUCT TABLE

Art. no.	Model	Dimensions <sup>1)</sup> [mm]	Material	PU
975606	Top	32,5 x 55 x 188	1.4016 according to EN 10088	10
975606	Base	29,5 x 55 x 216	1.4016 according to EN 10088	10

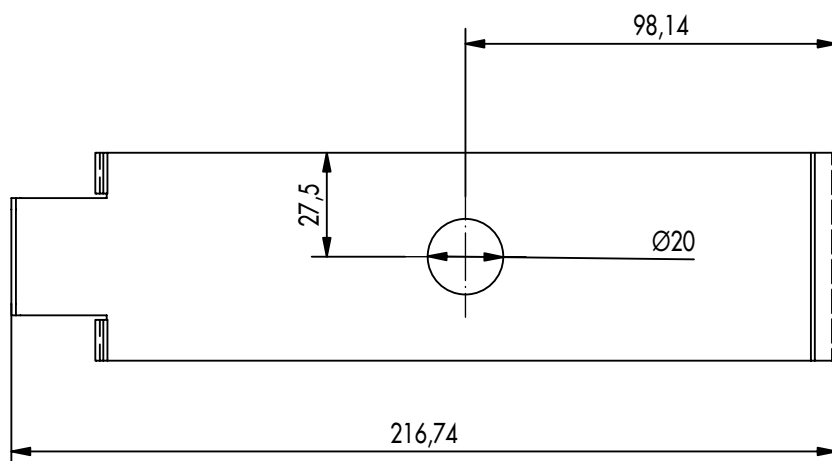
<sup>1)</sup>Height x width x length

DRAWINGS  
TOP:

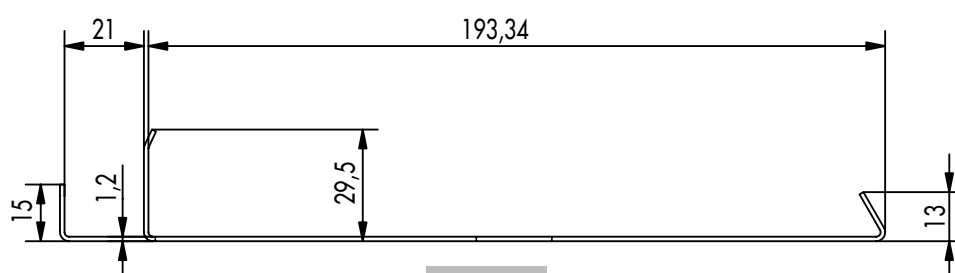


**PRODUCT DATA SHEET****TERRA EDGE FINISH SINGLE SUPPORT****DRAWINGS**

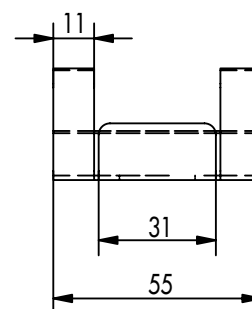
BASE:



Top view



Side view



Front view

If you are not familiar with how this product is used, and particularly with the product's intended use, please contact our Application Technology department ([technik@eurotec.team](mailto:technik@eurotec.team)).