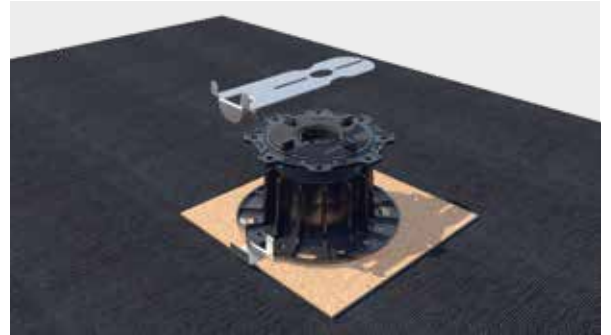


ASSEMBLY INSTRUCTIONS

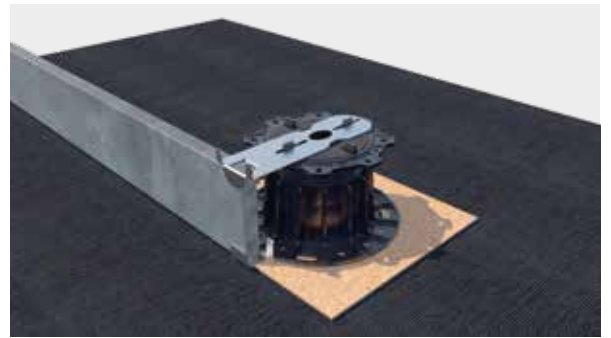
LOAD DISTRIBUTING PLATE

ASSEMBLY

1 Both individual parts are placed under or on top of the adjustable foot



2 Then the cut slabs are pushed sideways into the container.



3 The top cover can be easily placed on the upper bracket.



4 The side brackets hold both the stone covering and the slabs in position.



If you are not familiar with how this product is used, and particularly with the product's intended use, please contact our Application Technology department (technik@eurotec.team).