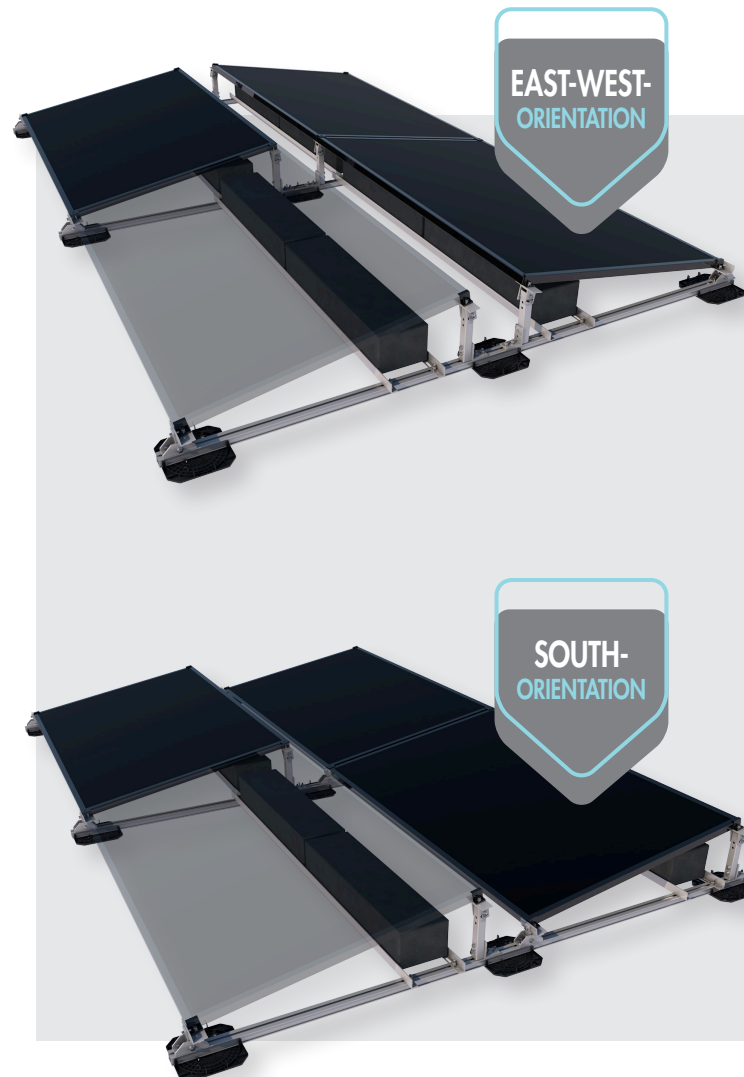




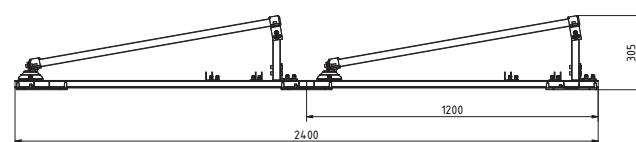
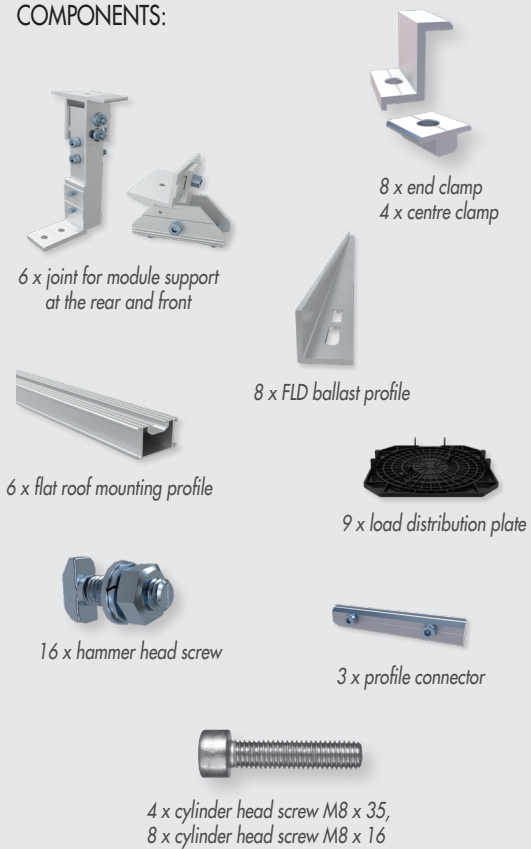
The specialist for fastening technology



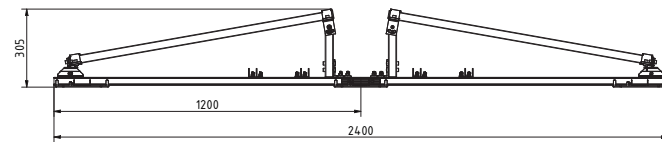
EAST-WEST-
ORIENTATION

SOUTH-
ORIENTATION

COMPONENTS:



South orientation



East-west orientation

Substructure for mini power plants, four solar modules

Art. no.	Orientation	Contents	PU
SOL100003	East-West	94-piece	1
SOL100005	South	94-piece	1



The specialist for fastening technology

SUBSTRUCTURE FOR
MINI POWER PLANTS

NOW
NEW!



COMING SOON
BRACKET FOR WALL-MOUNTED POWER PLANTS
Be ready for our **new range!**



Follow us



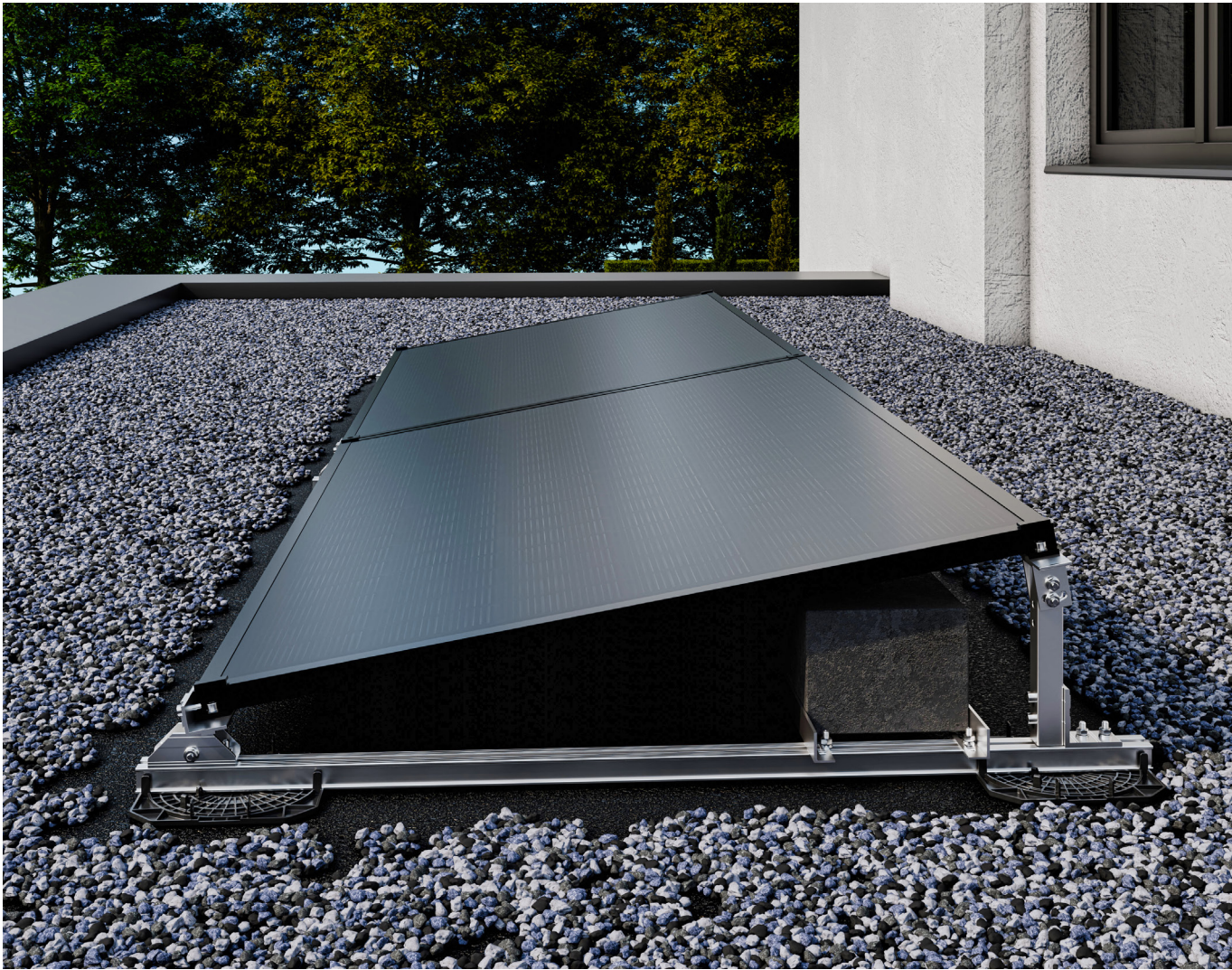
SUBSTRUCTURE FOR MINI POWER PLANTS

The mounting set enables **simple and safe installation** of your solar modules at an **installation angle of 10°**. Robust, weather-resistant and easy to install – perfect for **sustainable energy generation** on your garage roof. It is also versatile, whether on **flat roofs of carports, sheds, patio roofs** or **freestanding structures** in the garden.

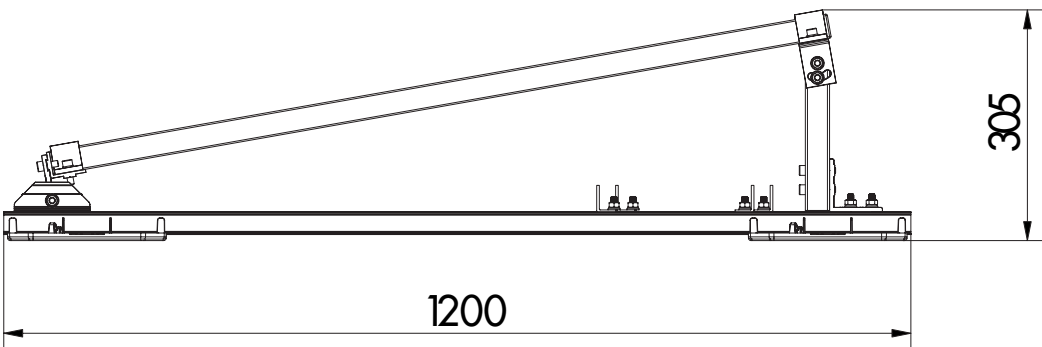
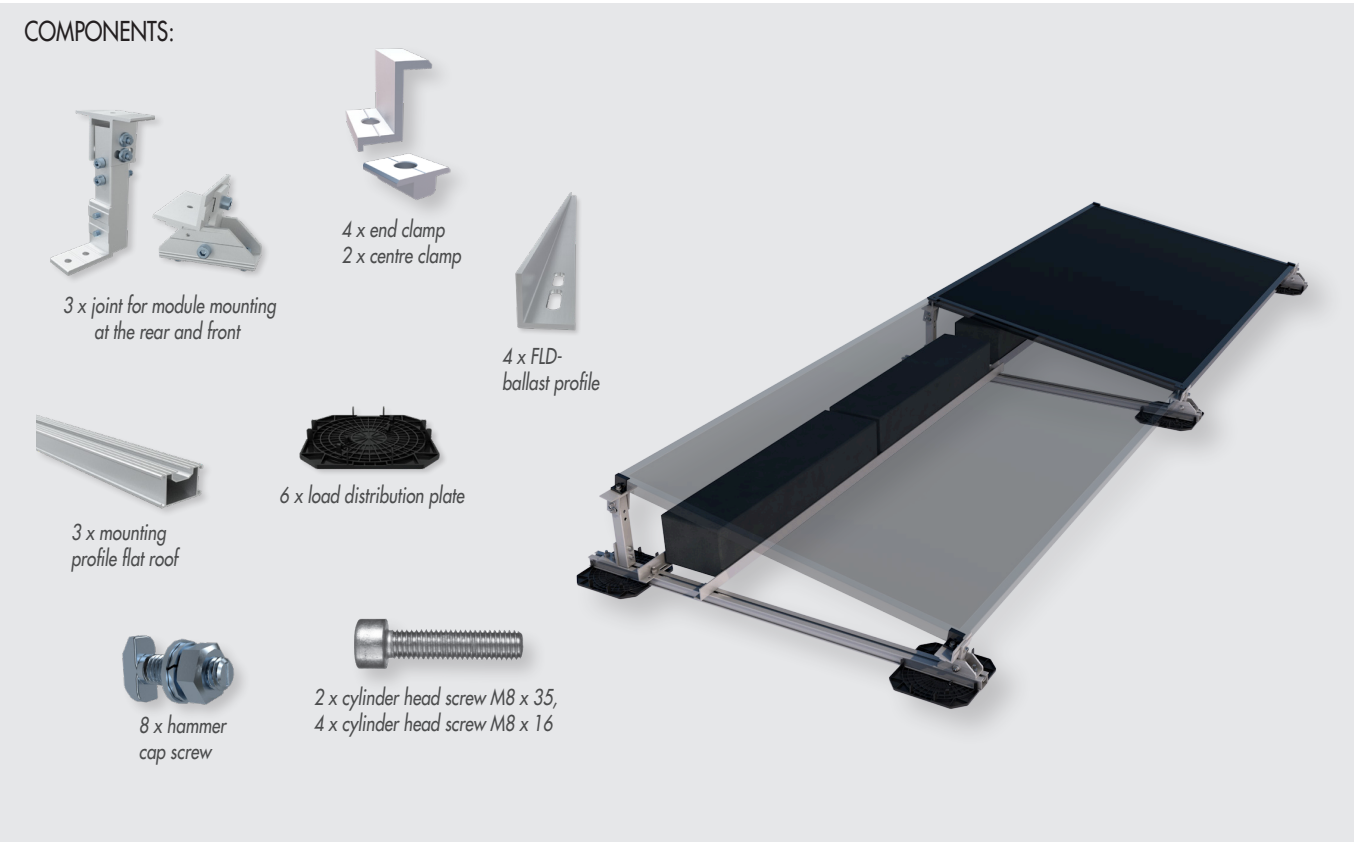
MAXIMIZE YOUR SOLAR ENERGY ON A WIDE VARIETY OF SURFACES!

ADVANTAGES

- Enables flexible alignment for maximum energy generation
- Weather-resistant
- All required parts are included in the set
- Suitable for various areas of application
- Load distribution plate protects the substrate



SUBSTRUCTURE FOR MINI POWER PLANTS,
TWO SOLAR MODULES



Substructure for mini power plants, two solar modules		
Art. no.	Contents	PU
SOL100004	47-piece	1