

Installation Guide – DrainTec Adapter

Required tools:

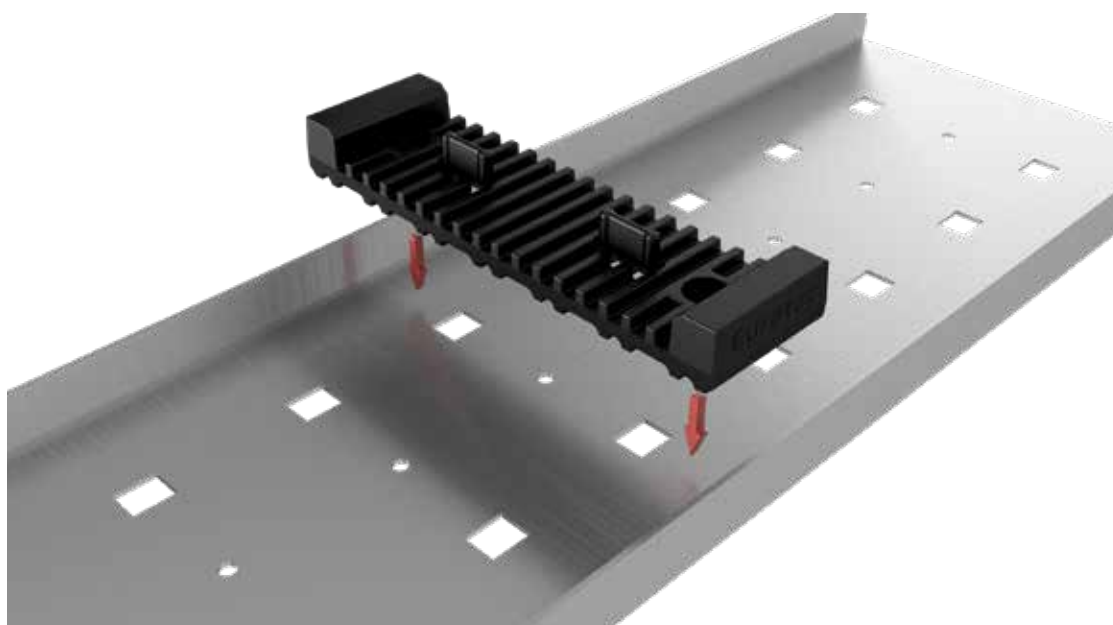
- Cutter
- For assembly with screws: cordless screwdriver

Requirements:

- Only to be carried out by qualified professionals.
- Width of the stone slab: 114 ± 0.5 mm
- Exclusively to be combined with the 975658 DrainTec Base

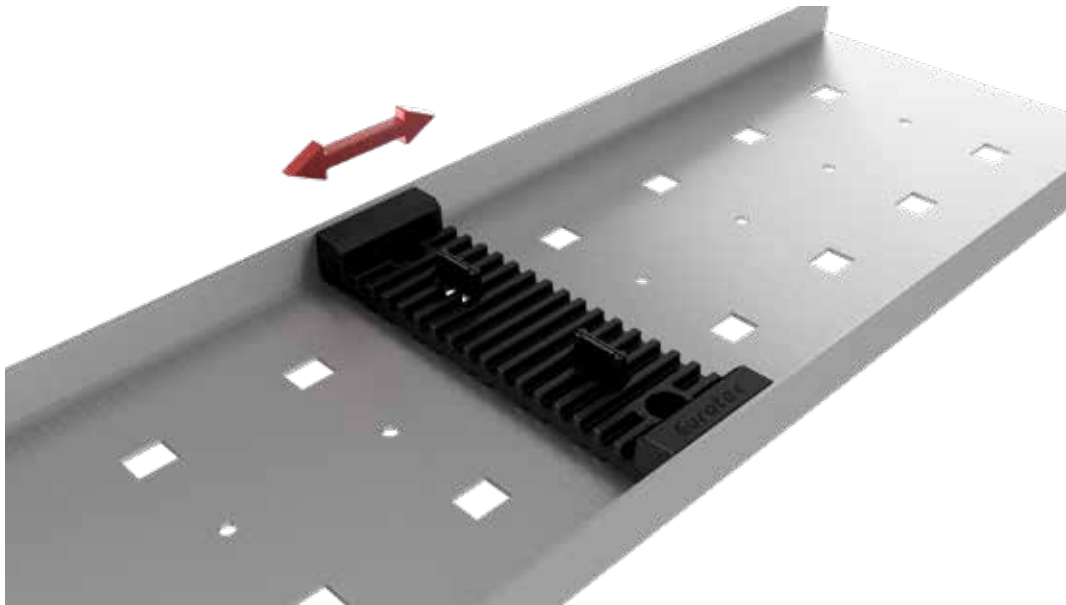
General assembly of the DrainTec Adapter

1. Press the adapter into the DrainTec Base.

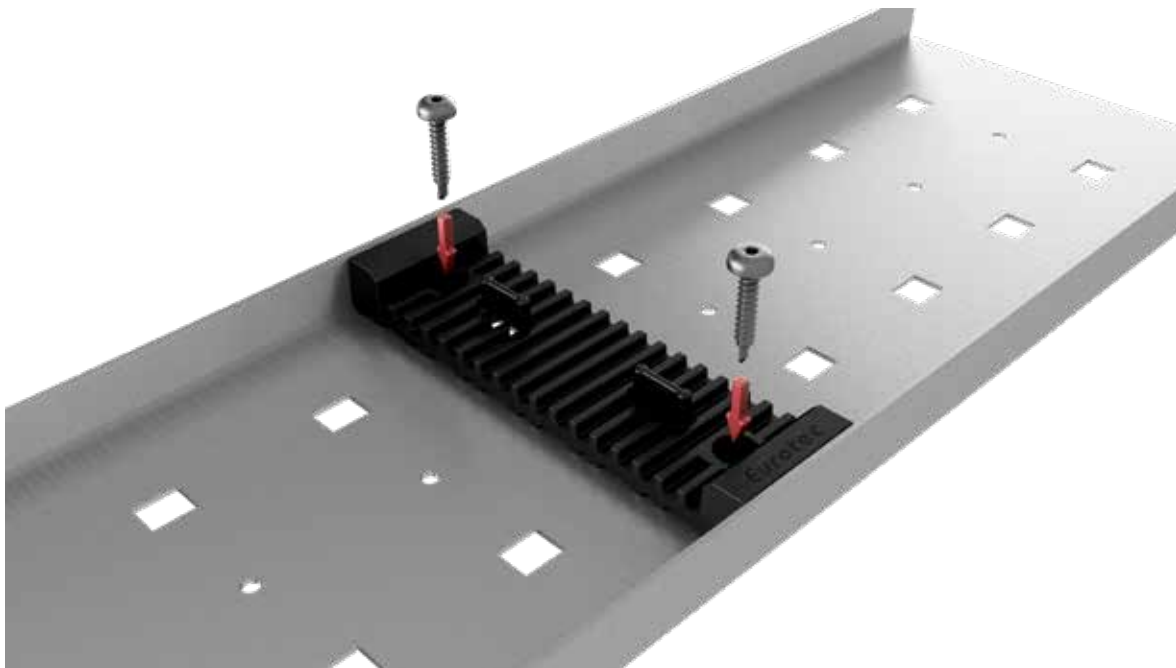


Installation Guide – DrainTec Adapter

2. Push the adapter to the intended position.

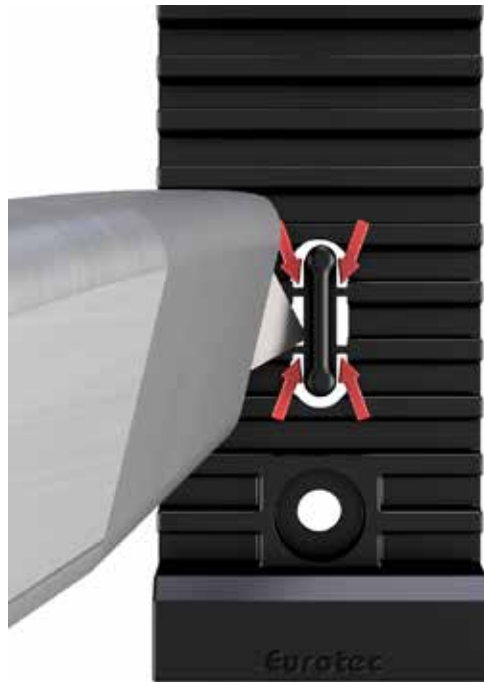


3. If required: Fasten the adapter with 954068 BiGHTY drill screw.



Installation Guide – DrainTec Adapter

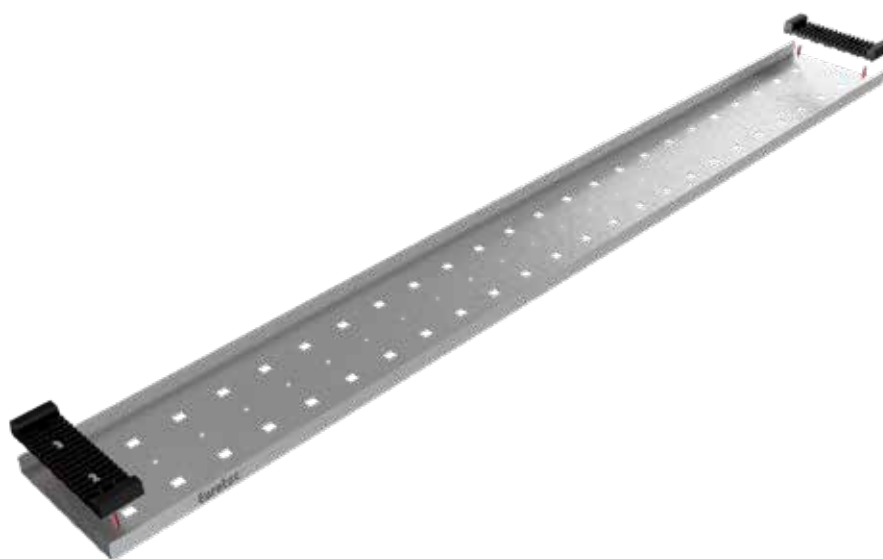
The bar can be removed in a few simple steps with a cutter to completely lay the plate on top.



Installation Guide – DrainTec Adapter

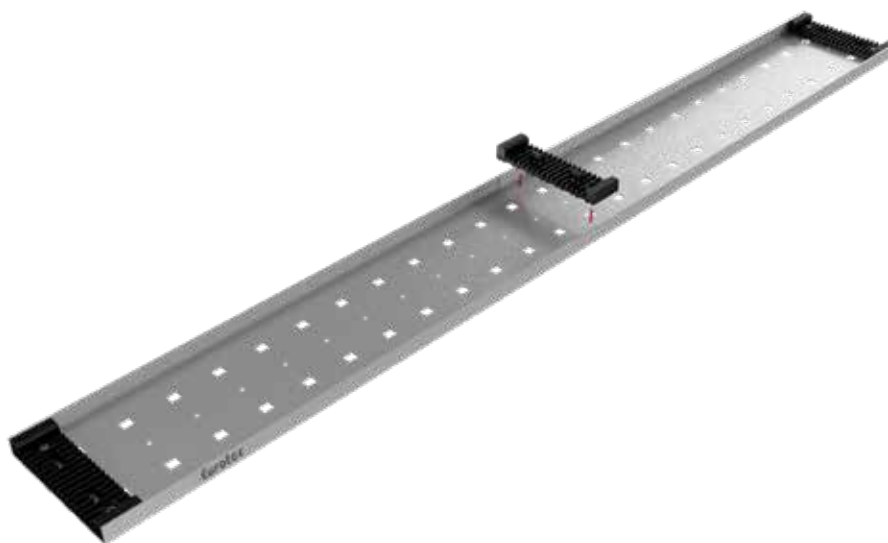
The correct arrangement of the DrainTec Adapter in the profile

1. Insert a DrainTec adapter at the beginning and end of the DrainTec base.



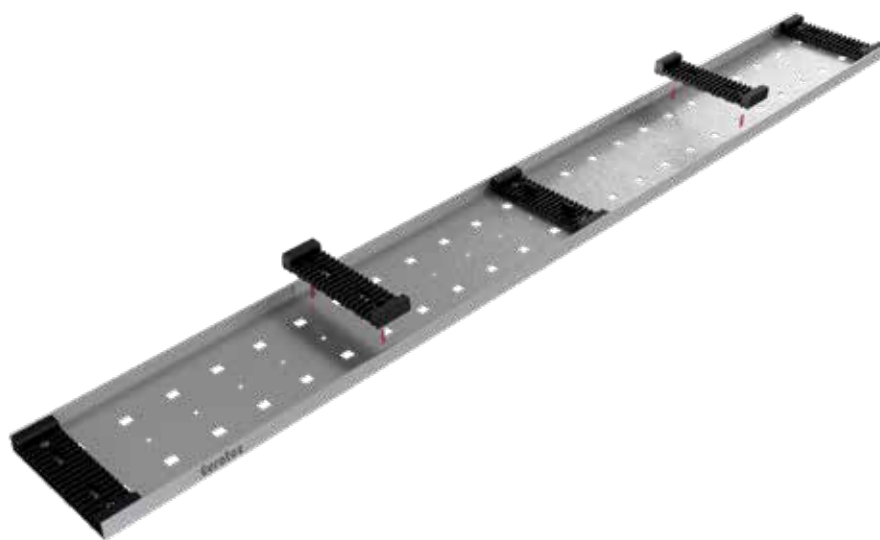
2. If it is not a continuous plate, adapters without the detached bar must be mounted between the stones.

(Note: Do not remove the bar from these adapters!)

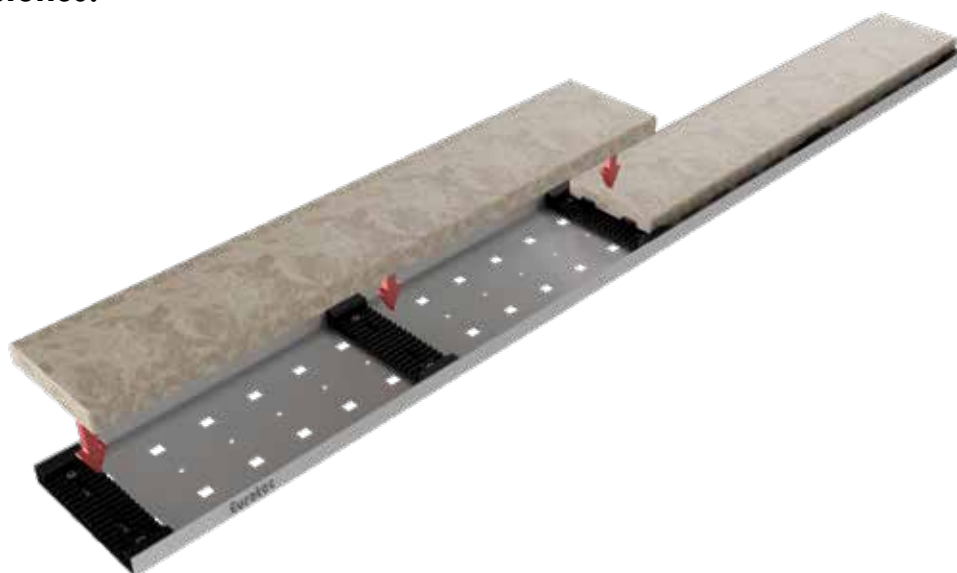


Installation Guide – DrainTec Adapter

3. Insert and fasten additional adapters at regular distances with the bridges being cut out. (Note: The maximum distance between the adapters is 300 mm.)



4. Insert stones.



If you are not familiar with how this product is used, and particularly with the product's intended use, please contact our Application Technology department (technik@eurotec.team).